

Manningham Municipal Fire Management Plan

2012 - 2015



Version Control

Version	Date	Comments	Distribution
1	8 September 2011	First draft for discussion	Terramatrix, executive committee, Helen Sinclair, Kim Halse, Jon Boura
2	5 October 2011	Second draft with executive comments included	Terramatrix, Manningham MFMP
3	24 October 2011	Third Draft	MFMP Committee
4	4 May 2012	Fourth draft with changes from MFMP.	MEMP Committee
5	26 July 2012	Fifth draft with changes from ERSFMP	

Acknowledgements


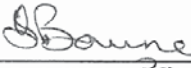
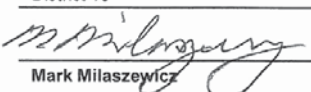
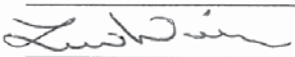
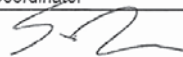
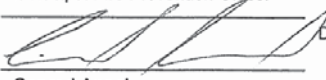
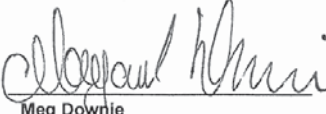
The Manningham Municipal Fire Management Planning Committee acknowledges and thanks all those that assisted in the development of this plan throughout the consultation process and those who supplied agency specific information.

Photos supplied by MFB, Manningham City Council and ParksVic.

Designed and printed by Courtney – www.courtneycolor.com.au

Authorisation

This Municipal Fire Management Plan was adopted as the first iteration of the Manningham Municipal Fire Management Plan, in partnership with the agencies listed below.

Signed:	 Meg Downie Chair of the Manningham Municipal Fire Management Planning Committee	Date:	17/10/2012	Plan recommended by:	Municipal Fire Management Planning Committee
Signed:	 Gavin Wright CFA Operations Officer District 13	Date:	17/10/2012	Plan recommended by:	Municipal Fire Management Planning Committee
Signed:	 Mark Milaszewicz MFB Commander Community Resilience Eastern District	Date:	17/10/2012	Plan recommended by:	Municipal Fire Management Planning Committee
Signed:	 Lew Wilson Manningham City Council Municipal Emergency Management Coordinator	Date:	17/10/2012	Plan recommended by:	Municipal Fire Management Planning Committee
Signed:	 Gavin Tyler Manningham City Council Municipal Fire Prevention Officer	Date:	22/10/2012	Plan recommended by:	Municipal Fire Management Planning Committee
Signed:	 Conrad Annal Parks Victoria Ranger In Charge	Date:	17/10/2012	Plan recommended by:	Municipal Fire Management Planning Committee
Signed:	 Meg Downie Chair Manningham MEMPC	Date:	4 May 2012	Plan endorsed by:	Manningham Municipal Emergency Management Planning Committee

Acronyms

BMO	Bushfire Management Overlays
BPA	Bushfire Prone Area
BPPP	Bushfire Prevention and Preparedness Plan
CERA	Community Emergency Risk Assessment
CERM	Community Emergency Risk Management
CFA	Country Fire Authority
CIG	Community Information Guide (formerly Township Protection Plans)
DEECD	Department of Education and Early Childhood Development
DHS	Department of Human Services
DPCD	Department of Planning & Community Development
DPI	Department of Primary Industries
DSE	Department of Sustainability & Environment
EMMV	Emergency Management Manual Victoria
EVC	Ecological Vegetation Communities
FDP	Fire Danger Period
FRV	Fire Ready Victoria
HAZMAT	Hazardous Material
IFMP	Integrated Fire Management Planning
MEMPC	Municipal Emergency Management Planning Committee
MERO	Municipal Emergency Resource Officer
MFB	Metropolitan Fire Brigade
MFMP	Municipal Fire Management Plan
MFMP	Municipal Fire Management Planning Committee
MFPC	Municipal Fire Prevention Committee
MFPO	Municipal Fire Prevention Officer
NSP	Neighbourhood Safer Places
ParksVic	Parks Victoria
PLR	Places of Last Resort
PPRR	Prevention, Preparedness, Response and Recovery
RSFMP	Regional Strategic Fire Management Plan
RSFMPC	Regional State Fire Management Planning Committee
SFMPC	State Fire Management Planning Committee
SFP	Special Fire Protection
TFB	Total Fire Ban
TFI	Tolerable Fire Intervals
TPP	Township Protection Plan (now called Community Information Guide)
UFRP	Urban Fire Risk Profiling
VBRC	Victorian Bushfire Royal Commission
VEMC	Victorian Emergency Management Council
VFRR-B	Victoria Fire Risk Register - Bushfire
VICPOL	Victoria Police
VICSES	Victoria State Emergency Service
VPE	Vulnerable People in Emergencies

Contents

Authorisation	3
Acronyms	4
1 Introduction	7
1.1 Context	7
1.2 Core membership of the Manningham Municipal Fire Management Planning Committee	8
1.3 Authority for the plan and planning process	9
1.4 Plan endorsement, adoption and audit	9
1.5 Period of the plan	10
1.6 Plan review	10
1.7 Summary of the plan preparation process	10
2 Engagement and communications	11
2.1 Community engagement	11
2.2 Communications	11
2.3 Submissions	12
2.4 Stakeholder analysis	12
2.5 Communication and engagement principles	13
2.6 Stakeholder communications objectives	13
3 Summary of the Environmental Scan	15
3.1 Location	15
3.2 Natural environment	16
3.3 Demographics	17
3.4 Fire management implications	19
3.5 Specific risk locations	24
3.6 Future fire management implications	25
3.7 History of fire	26
4 Municipal fire management objectives	27
4.1 Manningham FMPC objectives:	27
4.2 Purpose	27
4.3 Aligning with the Eastern Metropolitan Regional Strategic Fire Management objectives	28
4.4 Broader purpose of the Manningham Municipal Fire Management Plan	28
4.5 Strategic directions	29
4.6 Links to other business planning and programs	29
5 Fire risk management strategies	31
5.1 Risk identification	31
5.2 Precincts	34
5.3 Risk assessment	37
5.4 Victorian Fire Risk Register – Bushfire (VFRR-B)	38
5.5 Community Information Guides (formerly Township Protection Plans TPPs)	39
5.6 Neighbourhood Safer Places	39
5.7 Community Fire Refuges	39
5.8 Hazardous trees	39
6 Plan reporting and review	41
6.1 Plan endorsement and adoption	41
6.2 Plan audit and review	41
6.3 Reporting on plan outcomes	41

Appendices

- A.1 Victorian Fire Risk Register – Bushfire (VFRR-B)
 - A.2 Structure Fire Risk Management Register
 - A.3 Hazardous Materials Risk Management Register

 - B Multi Agency Action Plan

 - C. 2 Community Information Guides (formerly Township Protection Plans)
 - C. 3 Neighbourhood Safer Places (NSP)
 - C.4 Community Fire Refuges

 - D.1 Community engagement work plan
 - D.2 Stakeholder matrix
 - D.3 List key stakeholders - based on the IAP2 spectrum in the Community Consultation and Engagement Policy (2010)

 - E. Maps
- Bibliography

1. Introduction

South-east Australia is one of the most fire prone areas in the world. Compounding factors such as recent drought, climate change and increasing population living in high risk areas put our communities at risk of being exposed to bushfire. The Black Saturday bushfires of February 2009 remain a constant reminder of why we should plan for unplanned fire events in the landscape.

Whilst careful attention needs to be given to the management of bushfire risk in Victoria, many lives are lost every year as a result of structure fires and other fire related incidents in our community. As such, this plan considers all fire hazards in the urban and rural environments.

Approaches to fire management need to be based on robust risk assessment processes. This plan includes an analysis of fire related risk and identification of relevant treatments for increased safety. It places emphasis on integrated sustainable management solutions across differing land tenures and land uses.

Effective and efficient fire management is built on past learning, continuous improvement and requires the commitment of all stakeholders with responsibilities for land and fire management and the welfare of all members of the community, particularly those vulnerable to the impacts of fire. As such Victoria's fire agencies play a significant role in supporting communities to build self-reliance and resilience.

The best results in fire management can be achieved through the empowerment of communities to make appropriate decisions in planning for and responding to the threat of fire in the landscape and in their homes and businesses.

1.1 Context

This Manningham Municipal Fire Management Plan (MFMP) will replace the current Municipal Fire Prevention Plan (MFPP) as new fire planning arrangements are introduced across the State of Victoria.

The Manningham MFMP is a sub plan of the Manningham Municipal Emergency Management Plan (MEMP). It is a significant part of the Victorian Government's Integrated Fire Management Planning (IFMP) process. IFMP aims to achieve a consistent and effective means for fire management planning within Victoria through a commitment to cooperation, including information sharing and the building of collective knowledge. IFMP operates at the State, regional, municipal and local (in some areas) levels. Each level has different objectives, these are as follows.

State

The State Fire Management Strategy 2009 provides the guidance for a combined and organised effort in lowering the risk of fire through cooperative principles in the State of Victoria.

Region

The Eastern Metropolitan Regional Strategic Fire Management Plan (RSFMP) provides the risk management requirements and quantifies the need for planning at municipal level involving an all agency approach, while embracing the broader community and stakeholders.

Municipal

Municipal Fire Management Plans (MFMP) provide a consistent approach to fire management planning within the municipal area through commitment to cooperation, including sharing and building of collective knowledge and experience at the municipal level.

This is done through the Municipal Fire Management Planning Committee (MFMP) who work collaboratively to achieve the following planning outcomes:

- The implementation of common planning models and methodologies;
- Allocation of resources and accountabilities;
- Participation in common decision making through the committee process;
- Collaborative delivery of fire management activities; and
- Cooperative engagement.

The Manningham MFMP is a sub plan of the Manningham MEMP, is risk based and has been developed using principles outlined in the IFMP Framework (2010) and IFMP Guidelines (2010), and the Guidelines for Municipal Fire Management Planning, Part 6A: Emergency Management Manual Victoria (2011).

Critical to the success of IFMP is the ongoing building and maintaining of relationships across government, the private sector and the broader community. Participation, support and cooperative decision making by all these sectors working in collaboration to develop fire strategies, programs and plans for all types of fire risk, and meeting the needs of local communities are essential for effective implementation of IFMP.

The Manningham MFMP is an integrated plan combining plans from the Manningham City Council, the Department of Sustainability and Environment (DSE), Parks Victoria (ParksVic) Country Fire Authority (CFA), Metropolitan Fire Brigade (MFB) VicRoads and other key stakeholders.

1.2 Core membership of the Manningham Municipal Fire Management Planning Committee

The Municipal Fire Management Planning Committee (MFMP), appointed by the Municipal Emergency Management Planning Committee (MEMPC), has representation from the following organisations:

- Manningham City Council
- MFB
- CFA
- ParksVic/DSE

Advisory agencies may also attend to give their expert advice. These agencies may include:

- Victoria Police
- VicRoads
- DHS
- Melbourne water
- SPAusnet

The MFMP has the following role:

- Identifying and prioritising the risks and vulnerabilities across the municipal area;
- Reducing the likelihood and consequence of fire hazards within local communities;
- Management of local priorities relating to protection of communities and assets;
- Development and implementation of works programs for the management of fires, including hazard removal and fuel management;
- Community engagement activities;
- Identification of reliable water supplies;
- Encouragement of increased responsibility by the community;
- Consideration of planning across municipal boundaries; and
- Elevation of matters to the regional fire management planning committee.

All agencies and organisations with responsibilities under the MFMP have provided written confirmation of their capability and commitment to meet their obligations as specified and agreed in the plan. The 'all agencies' aspect of Victoria's emergency management arrangements recognises however that all agencies; not just those MFMP members have a role in fire management and protecting the community from fire risk.

1.3 Authority for the plan and planning process

Authority for this plan is derived from the Emergency Management Act 1986 (S21(5)). In the country area of Victoria, a MFMP prepared and endorsed in compliance with the guidelines contained within Part 6A of the Emergency Management Manual Victoria (EMMV), will be deemed to fulfil section 55A of the Country Fire Authority (CFA) Act 1958.

The Council's fire prevention responsibilities derive from the Country Fire Authority Act, 1958 and Metropolitan Fire Brigades (MFB) Act, 1958 and are to take all practical steps (including burning) to prevent the occurrence of fires on, and minimise the danger of spread of fires on and from land under its control or management (CFA Act, s.43; MFB Act, s.5 (1) (a)).

The MFMP has replaced the Municipal Fire Prevention Committee (MFPC) which is constituted under s.54 of the CFA Act to undertake a range of functions including advising Council on the existence and management of hazards and making recommendations in the preparation of the Municipal Fire Prevention Plan (MFPP) (CFA Act, s.55). This plan is consistent with Action 1.1.7 of the Manningham Council Plan 2009-2013 and fulfils all legislative fire prevention requirements.

1.4 Plan endorsement, adoption and audit

This MFMP has been completed to the satisfaction of the committee. The MFMP and MEMPC have endorsed this MFMP.

After the MFMP was endorsed by the MFMP and the MEMPC, it was sent to the Regional Strategic Fire Management Planning Committee (RSFMPC) for comment.

Following community engagement due to commence in early 2013 this MFMP will be recommended to Manningham City Council for adoption.

This MFMP adopted by council will be deemed to meet the requirements of a municipal fire prevention plan pursuant to s55A(1) of the CFA Act, provided that it contains the provisions as set out in s55(A)2. The MFMP will be audited in accordance to s.55B of the CFA Act 1958, triennially, by the CFA's Fire Prevention Improvement Officer.



1.5 Period of the plan

The Manningham MFMP has a three year planning cycle. It will be reviewed on a 12 monthly basis after the final adoption of the plan by Manningham MEMPC.

1.6 Plan review

The plan is reviewed and updated annually by the MFMPCC to ensure it meets community needs and expectations. This review takes into account works completed, environmental changes and any additional risks. Any significant changes to the plan should be approved by MFMPCC members and articulated through the MEMPC and Council.

This MFMP will be reviewed and amended as per the actions listed in the Multi Agency Action Plan Appendix B;

- Annually in association with the MEMPC;
- Changes to the Victorian Fire Risk Register (VFRR) and the Urban Fire Risk Profiling (UFRP) tool data will be updated in the plan;
- The MFMPCC will review the implementation of the treatments applied to VFRR and UFRP tool identified risks by each agency (as appropriate);
- Requirement for additional or alternative treatments to mitigate identified risks will be assessed;
- Following significant incidents if required;
- As directed by the State or Regional Fire Management Planning Committees (SFMPCC or RSFMPCC's); and
- As required by legislation.

1.7 Summary of the plan preparation process

The Manningham City Council's former Municipal Fire Prevention Plan (MFPP) was developed using the principles of risk management, it was completed in September 2010 and has undergone review and consultation to ensure its relevance and that it meets community needs and expectations. The bulk of the programs within The MFMP have been reviewed and carried forward from the MFPP with more emphasis being placed on urban risk to truly reflect the overall fire risk within the municipal area.

The preparation of this MFMP has involved the experience of agencies and authorities charged with responsibilities for fire management, local CFA brigades and community consultation. This collaboration has ensured the development of a holistic and integrated approach to fire management across all land users, and that the strategies adopted were based on technical skills, practical local knowledge and common sense.

The Manningham municipal area is part of the Eastern Metropolitan Region and reports to the Eastern Metropolitan RSFMPCC that acts to ensure that any risks that cross municipal boundaries are treated in a seamless and consistent manner, regardless of land tenure.

This MFMP has been prepared by the Manningham MFMPCC in accordance with the IFMP process and legislative requirements. The seven stages (environmental scan, risk assessment, analyse, decide, publish, deliver, monitor & improve) are shown in Figure 1. Each of the stages guide the planning process the Manningham MFMPCC has followed and will continue to do so into the future.

Figure 1 – Integrated Fire Management Planning (IFMP) Process



2. Engagement and Communications

The MFMPC is responsible for developing the Stakeholder and Community Engagement Plan, is committed to consulting with stakeholders and the community to develop and further inform fire management planning.

Valuing local knowledge and recognising the unique contribution communities can make to the fire planning process has guided the consultation program.

Effective community engagement and education is essential if the vision for the future of fire management in Victoria is to be achieved. This will occur through:

- active participation of community, the fire management sector and government, collaboratively working and planning together to reduce the destructive impact of fire on communities and the environment;
- communities that have greater resilience to the effects of fire;
- greater understanding of the fire sector within the community; and
- healthy, natural, social, built and economic environments.

The key principles guiding this communications and engagement strategy are transparency, openness and collaboration.

The opportunity to align fire planning consultation by key organisations including CFA, MFB, Manningham City Council, VICPOL, DSC and ParksVic of this process.

2.1 Community engagement

Community engagement is a high priority for all levels of government. Undertaking, effective community engagement is critical to assisting agencies and communities to better plan, prepare, respond and recover from bushfires.

A six-week community consultation program will commence in February 2013 (Appendix D1).

Key elements being considered for this program include:

- community information sessions held in conjunction with Fire Ready Victoria (FRV) meetings targeting high risk communities in Manningham;
- workshops with Community Fire Guard Groups;
- inclusion of a cover letter with the distribution of the Community Information Guide;
- briefings with CFA brigade and volunteer members; and
- an online engagement program.

2.2 Communications

An extensive communications plan will support the consultation program and raise awareness among the general community about the role of the fire management planning in our community.

Key communications activities will include:

- media campaign and advertising of consultation program;
- direct mail to high-risk communities;
- distribution of flyers and posters through community networks;
- promotion through Manningham City Council, MFB, CFA, and ParksVic community networks; and
- direct invitation to key stakeholders.

2.3 Submissions

The community is invited to submit feedback in response to the MFMP. At the conclusion of consultation period the relevant agency together with the MFMP will review, assess and respond to community submissions and update the MFMP accordingly.

2.4 Stakeholder analysis

The production of the first iteration of Manningham's MFMP was put together by the MFMP made up of representatives from Manningham City Council, CFA, MFB and ParksVic.

As a sub-plan to Manningham's MEMPC the MFMP was then put before the MEMPC for comment. This committee has broader representation including SES, DHS, DEECD and VICPOL.

An initial stakeholder analysis was carried out to identify relevant stakeholders and their level of participation in the MFMP planning process. These stakeholders were divided into three groups depending on their involvement in fire planning within Manningham:

- Primary – permanent MFMP members;
- Secondary – MEMPC members; and
- Tertiary – other agencies, organisations or community groups that could have valuable input towards to the MFMP

Stakeholder engagement and participation is an essential element of fire management planning.

Stakeholders are required to participate for a range of reasons, including (but not limited to):

- Legislative responsibilities in relation to fire management;
- Leadership;
- Provision of hazard expertise and technical advice;
- Subject to hazard impact – directly and/or indirectly;
- Land tenure and management arrangements;
- Expressed expectations; and
- Influence and/or support mitigation.

The stakeholders involved in fire management planning in the Manningham municipal area are listed in the Stakeholder matrix in Appendix D.2 (Manningham MFMP Stakeholder and Community Engagement Plan). The level of participation in IFMP at the municipal level is dependent upon the number and criticality of assets and level of responsibility they have in fire management.

This stakeholder analysis informed the development of the Stakeholder and Community Engagement Plan; which will develop a shared understanding of how communications will occur, when communications will occur and why communications will occur. This will increase efficiencies, reduce duplications and provide consistent messaging through the implementation of IFMP in the Manningham municipal area.



Photo supplied by MFB

2.5 Communication and engagement principles

The Manningham MFMPC Stakeholder and Engagement Matrix (Appendix D.2) contained within the Stakeholder and Community Engagement Plan outlines the level of participation and information they will receive during the plan development, review and reporting phases of the planning and implementation process. This analysis is based upon the principles of International Association for Public Participation 2 (IAP2).

Inform

Provide appropriate detailed and accurate information to assist stakeholders develop a shared understanding of the complexity of issues, alternatives and possible solutions.

Consult

Utilise stakeholder expertise and diversity to obtain input into analysis, alternatives and develop key decisions.

Involve

Work directly with the suite of key stakeholders throughout the various processes to ensure key issues and intent are understood and considered.

Collaborate

Partner with key stakeholders in each aspect of decision-making. This includes the development of alternatives, the identification of contributions and priority actions with a clear understanding of the responsibilities of each stakeholder.

Empower

Foster and promote transparent and accountable processes that allow each stakeholder organisation to empower themselves through key actions and the implementation of responsibilities.

Appendix D.3 uses these principles and presents the methods that will be used in stakeholder and community engagement.

2.6 Stakeholder communications objectives

The achievement of fire management objectives and the success of fire management outcomes will be dependent on effective communications in all planning and implementation phases. A communications plan for the MFMPC will be developed in future iterations of this MFMP. The objectives of this communications plan will be to:

- Build a collaborative approach to IFMP;
- Identify internal communication flows within organisations;
- Ensure that communication across agencies is effective in developing a shared understanding of the issues and key responsibilities and that all agencies deliver a consistent message to the community and their stakeholders;
- Build resilient relationships and sound networks between key stakeholders;
- Consult with communities so that local knowledge is captured in the planning process that this communication plan supports;
- Foster better communication and planning between the agencies and local communities; and
- Achieve greater consistency from all levels of government on key policy issues.

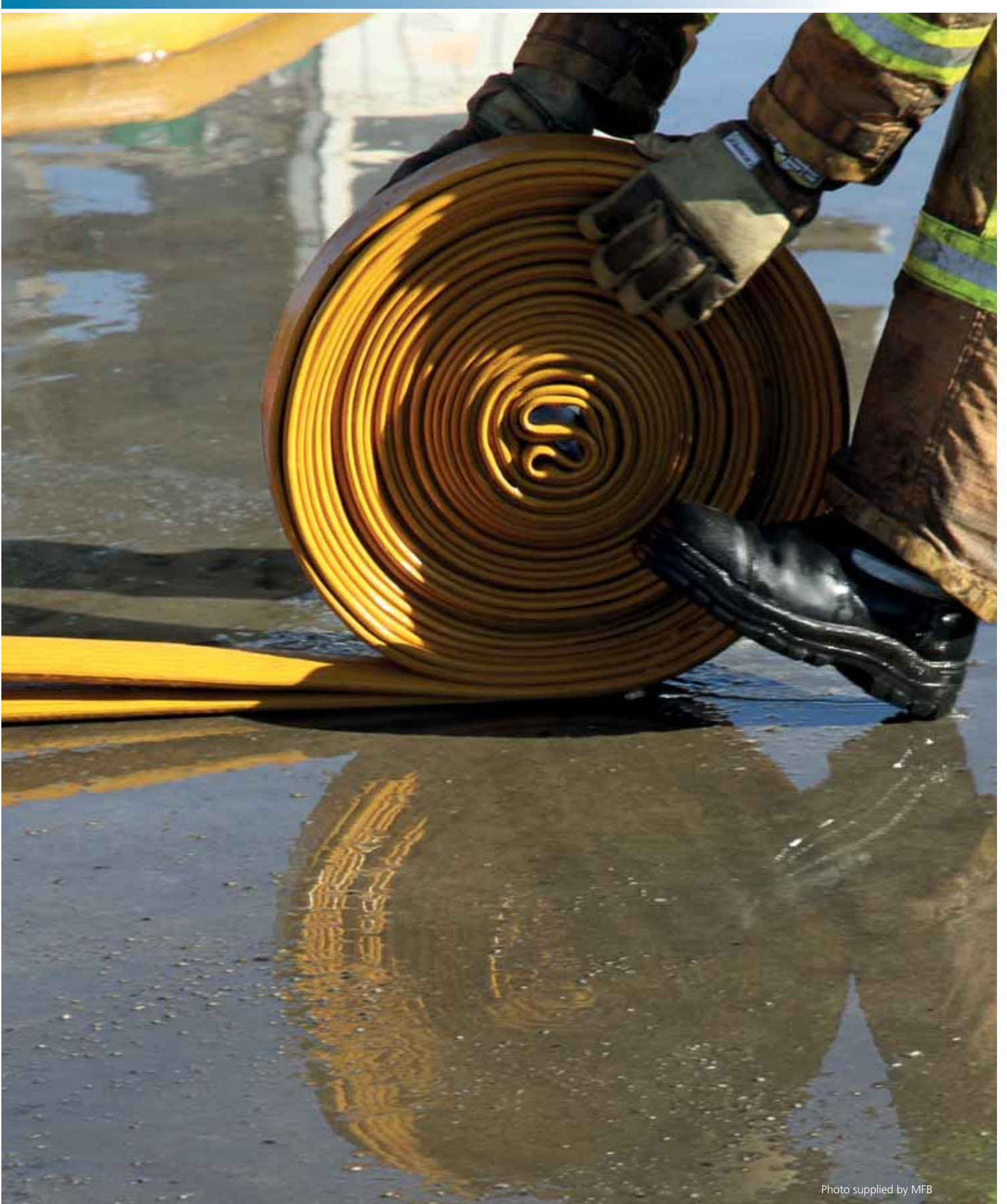


Photo supplied by MFB

3. Summary of the Environmental Scan

3.1 Location

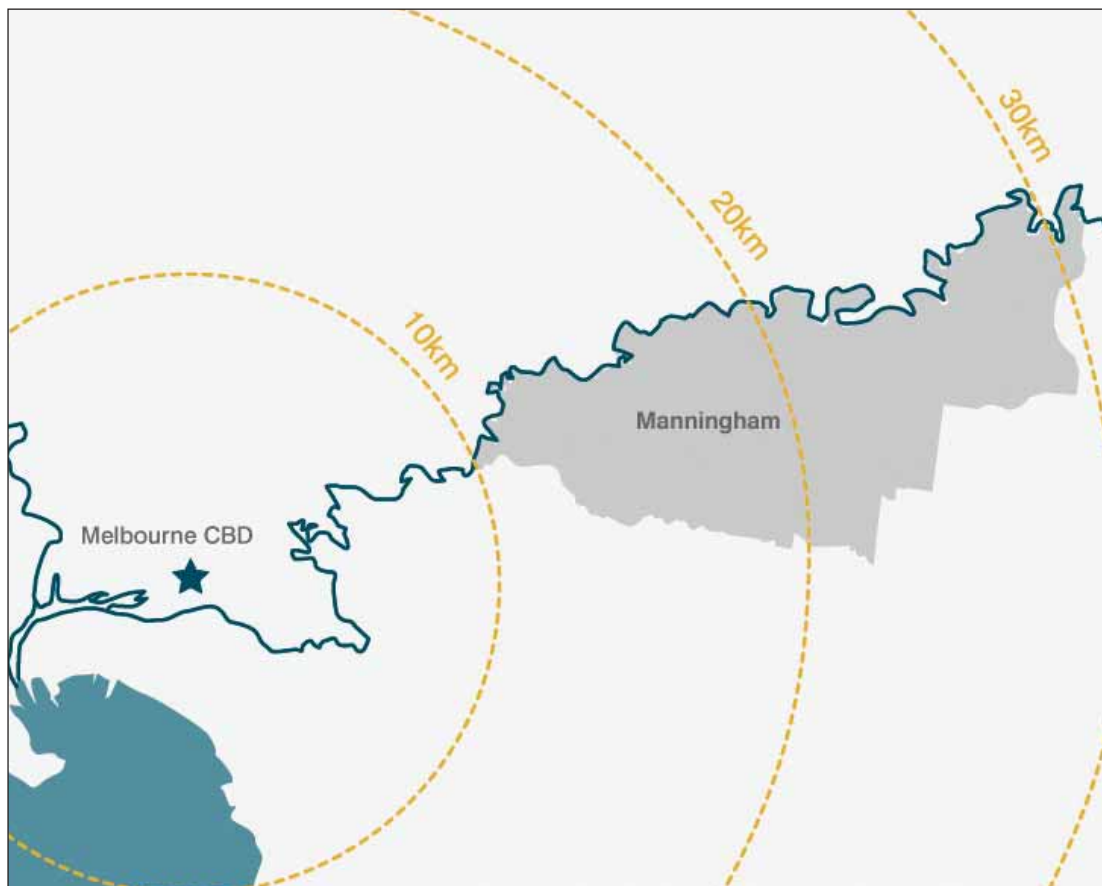
The City of Manningham is located about 12 kilometres east of central Melbourne and covers an area of approximately 114 square kilometres (Map 1). The Manningham municipal area begins at the junction of the Yarra River and Koonung Creek in the west, which forms a natural boundary to the area, with the Yarra River to the north and the Koonung Creek to the south.

The municipal area is divided by the Mullum Mullum Creek and the Urban Growth Boundary into two distinct topographic areas. Land to the west of the Mullum Mullum Creek is highly urbanised, while land

to the east is primarily semi-rural in character with vegetation contained in both public and private land and along riparian corridors. Residential development is largely focused in areas west of the Mullum Mullum Creek and includes the suburbs of Bulleen, Templestowe, Doncaster, Doncaster East, Donvale and Lower Templestowe. Residential areas located to the east of the creek are comprised of Warrandyte, Park Orchards and Wonga Park.

The Manningham MFMPC recognises this diverse mix of environments and Manningham is often referred to as the municipality that encapsulates a “balance of city and country”.

Map 1: Manningham Municipal Area



3.2 Natural environment

The natural environment and open spaces are important assets for Manningham residents and visitors. There are more than 1400 ha of parks, gardens and reserves, including the Yarra Valley Parklands and Warrandyte State Park, which contain numerous significant plant and animal species of state and national significance.

Manningham contains significant areas of indigenous vegetation that supports a diverse range of indigenous flora and fauna. Remnant indigenous vegetation has been identified, mapped and classified into a number of Biosites and assigned either National, State or Regional significance.

The vegetation in Manningham's fire risk areas consists predominantly of Box Stringybark Woodland on the slopes and hilltops and Manna Gum Riparian Forest along the valleys and creek lines (DSE Geospatial Data Library, 2003).

A significant amount of Manningham's biodiversity is located in the Manningham Green Wedge area

and along the Yarra River corridor. Within residential areas in the west of the municipal area, the original vegetation was largely removed for orchards and agricultural use and is now replaced by a new tree canopy associated with maturing gardens that contributes to the character of these suburbs.

Predominant areas of bushfire planning interest cover most of the eastern half of Manningham's geographic area in the semi-rural Manningham Green Wedge landscape. The eastern section of the municipal area has significantly more vegetation than the west, which is highly urbanised.

There are several clusters of small residential lots located in identified high risk bushfire areas. Due to the semi-rural dispersed lot pattern throughout the municipal area much of the eastern half of Manningham is susceptible to bushfires. Furthermore, areas at most bushfire risk are affected by vegetation, environmental and landscape-based overlays which seek to protect vegetation. There are also a number of single access roads and egress constraints, particularly at two bridge crossings of the Yarra River and through streets in the Warrandyte and Wonga Park areas.

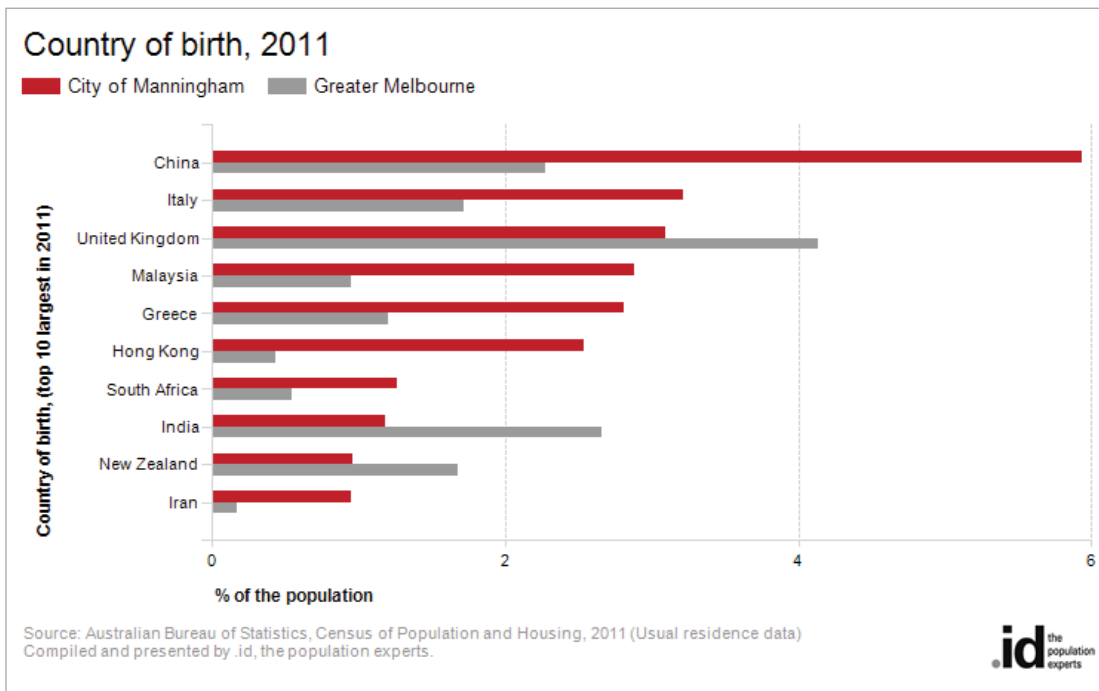


Photo supplied by Manningham City Council

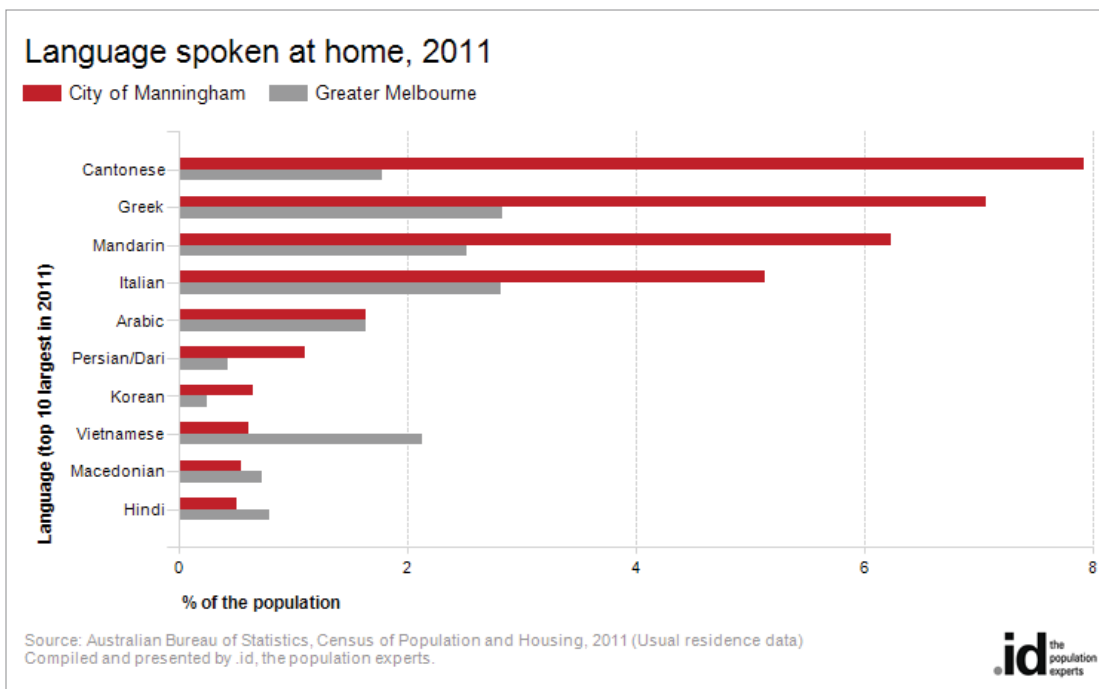
3.3 Demographics

The current official population of Manningham is 116,958 (Australian Bureau of Statistics, 2011). Forming 42,000 households with a projected population of 120,000 by 2021. The population has increased 1.6% since 2006.

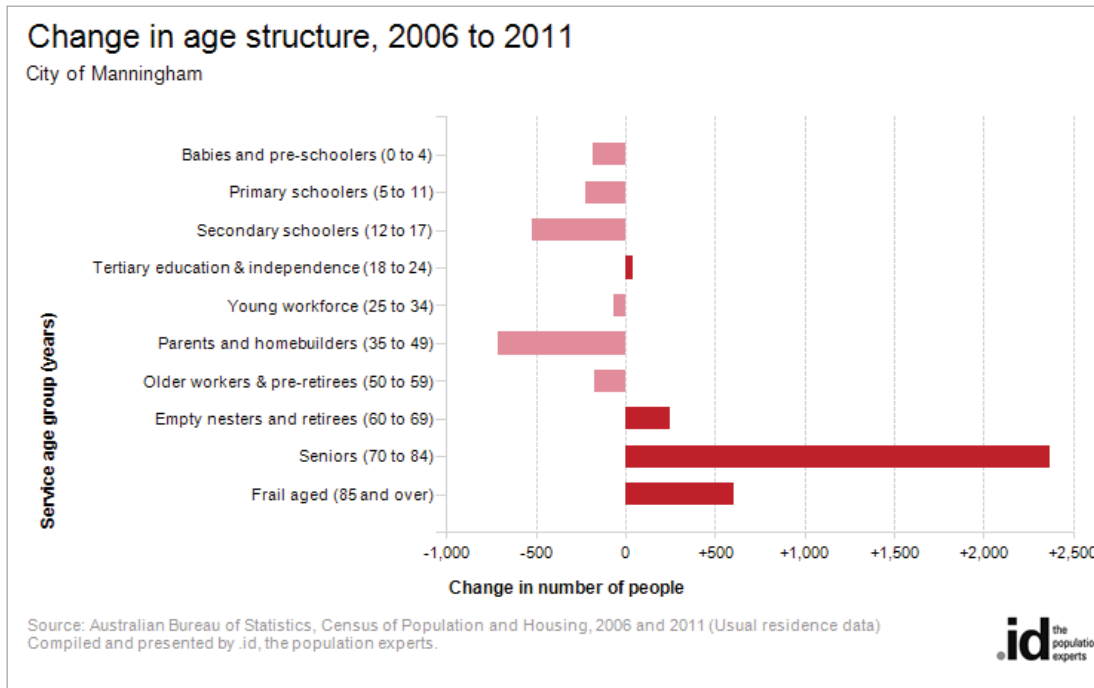
More than one third of Manningham residents were born outside of Australia with Italy, UK, Greece, China, Hong Kong and Malaysia being the major countries of origin.



In the City of Manningham 39% of people speak a language other than English at home.



The Manningham population is ageing and by 2021 it is predicted that the proportion of residents aged over 65 will increase by 51%. The age group which is forecast to have the largest proportional increase by 2021 is 80-84 year olds which is forecast to increase by 98.1%. Manningham residents are amongst the healthiest and longest lived in Victoria indicating a good quality of life.



For more information go to: <http://profile.id.com.au/manningham>

3.4 Fire management implications

Bushfire hazard

Manningham has a predominantly urban western half comprising the suburban living and major retail and commercial centres of Bulleen, Templestowe, Templestowe Lower, Doncaster and Doncaster East. Bushfire risk in this area is largely limited to public land along the Yarra River which runs along the northern boundary of the municipal area.

The eastern half of the municipal area is semi-rural and zoned as 'Rural Conservation' which also known as the Manningham Green Wedge. The east of the municipal area contains mostly larger rural residential properties, remnant agricultural properties, and significant bush blocks in Warrandyte, South Warrandyte, Wonga Park, Park Orchards and Donvale forming interface living and bush and parks precincts. The Yarra River forms the northern boundary of the municipal area with the dry forest and grassland of Nillumbik beyond. The landscape is typified by low hills (generally 130 -140 metres above sea level) with locally steep slopes and a series of creek valleys which meander north from the uplands in the south of the municipal area to the Yarra River. These include Ruffey Creek, Mullum Mullum Creek, Anderson Creek, Jumping Creek and Brushy Creek.

Under extreme fire danger conditions there is potential for a large established bushfire to enter the eastern part of the municipal area from the north. Equally a fire that starts in this part of the municipal area could grow rapidly and impact on hundreds of properties within the first few hours. Important State infrastructure such as electricity distribution lines run through these areas. There is potential for fire spread beyond Manningham into the Yarra Ranges and Maroondah municipal areas.

A key characteristic of the north eastern part of the municipal area is the prevalence of Burgan. Burgan is an erect shrub, normally two to five metres high, with small leaves and many small white flowers. It can invade and completely cover the area over time, potentially increasing fire hazard. Shrubby fuels like Burgan near houses can have an impact on the survival of houses during bushfires due to the effects of flame contact and radiant heat. Burgan also has high habitat and environmental values and is protected as an important native species. This vegetation type has been identified as a fire risk to the community in certain circumstances due to its volatile nature. High concentrations of Burgan that are located in areas close to residential properties are to be recognised as a specific hazard.

Another key characteristic of Manningham is the large areas of open space and the mix of urban and rural living. There are 9,841 hectares of private land, 1,415 hectares of parks and reserves and 197 hectares of other public land. Manningham encompasses nearly 20 square kilometres of open space, comprising more than 300 separate parks and reserves, and representing over 17% of the area of the municipality.

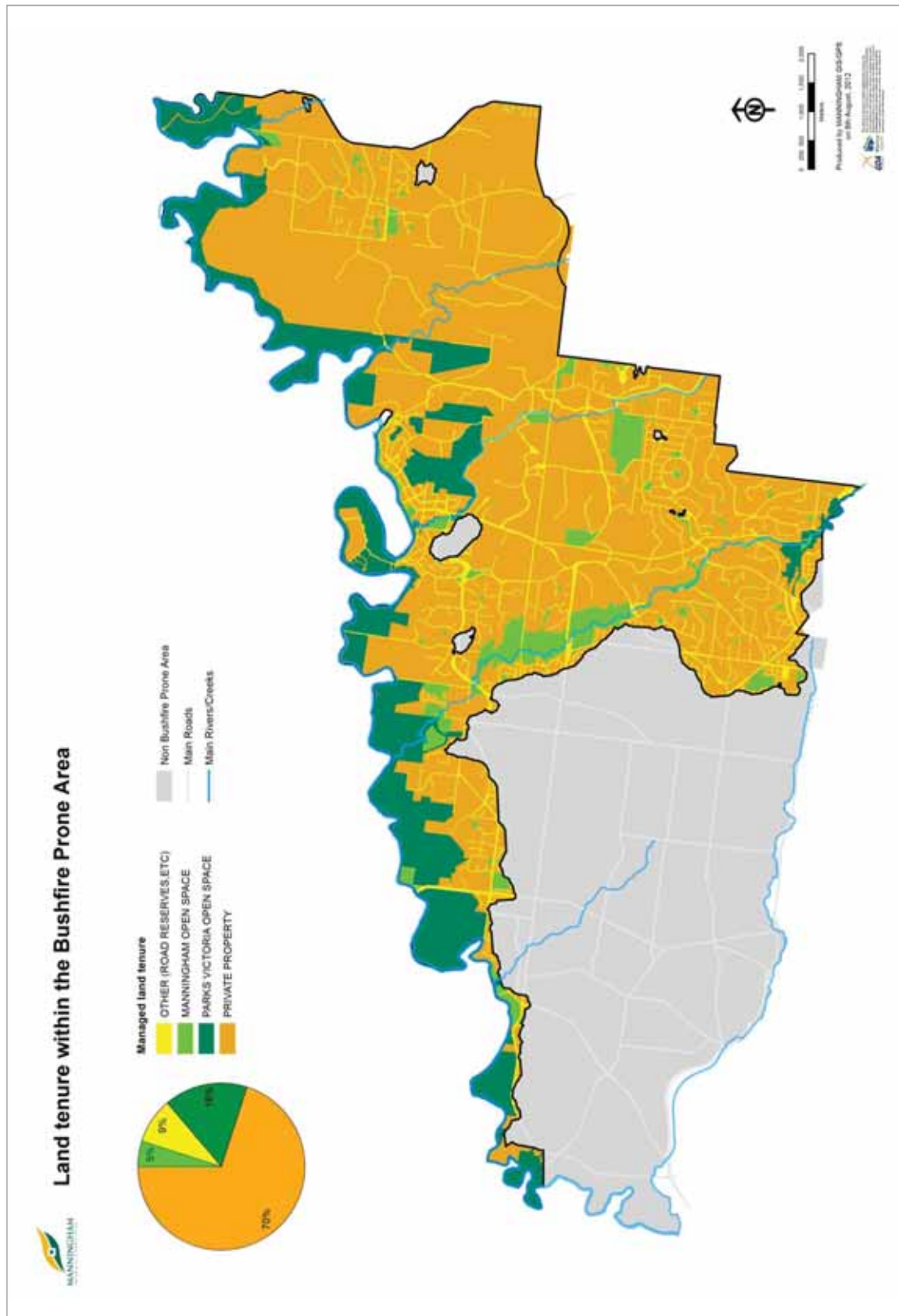
These areas are valued for a multitude of reasons by different individuals and groups; however they also pose a bushfire risk. Application of fire management in these areas is an important responsibility of the land manager. A well established and properly maintained fuel break network helps protect high value assets and critical infrastructure vulnerable to damage by bushfire through direct flame, radiant heat, convection and ember attack. Asset protect zones assist in protecting assets in immediate risk of fire and numerous community education programs assist in developing informed, self-reliant and resilient communities that are better placed to manage the risk of fire in bushfire environments. Most of the Green Wedge area of Manningham also falls into a designated Bushfire Prone Area. From 2011 the Department of Planning and Community Development is responsible for declaring these areas.

Due to the extent of heavily treed landscapes and dispersed rural communities found across the eastern parts of Manningham, there is a large and scattered population living in heavily vegetated semi-rural environments. Many of these areas are covered by vegetation, environmental and landscape-based planning overlays, which seek to protect native vegetation.

Within these non-urban areas of the municipality, there are a number of streets with restricted access and egress. This is due to the pattern of existing roads (both minor unsealed access roads and major arterial roads), being predominantly single carriageways that follow the topography and landscape, in combination with extensive roadside vegetation. There are also broader community access concerns in Warrandyte, relating to the ability of primary road networks to accommodate the evacuation of an area's population during a fire event. These same concerns may result in emergency fire fighting vehicles and police being unable to respond in certain areas and under certain conditions.

Land tenure shown in Map 2 illustrates that over 70% of land within the Manningham BPA is privately held constraining the ability of agencies to directly manage vegetation in certain areas. It is therefore the role of agencies to influence property owners to undertake fire planning on their properties through initiatives like the CFAs Home Bushfire Advice Service and Community Fireguard and joint education campaigns before and during every fire season.

Map 2: Land Tenure within the Bushfire Prone Area



Urban fire hazard

Residential fire risk is present throughout the municipality, whether in the township and suburban living precinct in the west or the interface living precinct areas to the east of the Mullum Mullum Creek. Council is encouraging high rise residential development up to 12 stories in height and there are already some examples in place on Doncaster Hill.

Manningham contains significant business and community activity centres including Doncaster Hill (incorporating Doncaster Shoppingtown) which is designated a principal activity centre; and The Pines, East Doncaster which is a major activity centre. There is potential for significant structure fires in such complexes which could impact upon large numbers of people.

There are also ten neighbourhood activity centres comprising Donburn, Tunstall Square, Jackson Court, Templestowe Village, Macedon Square/Macedon Plaza, Bulleen Plaza, Doncaster East/Devon Plaza, Park Orchards, Warrandyte Township and Warrandyte Goldfields.

There is little industry within Manningham and only a few remnant agricultural properties mainly in the east of the city. Industrial premises are confined to Bulleen, Templestowe and Doncaster and are generally light industry such as motor vehicle servicing, building and construction services and printing services.

The risk from hazardous materials is confined largely to commercial premises including plant nurseries; to transport including the Eastlink tunnels; and service industries including the health and aged care, Aquarena, the City of Manningham works depot and SP-AusNet terminal station at Templestowe.

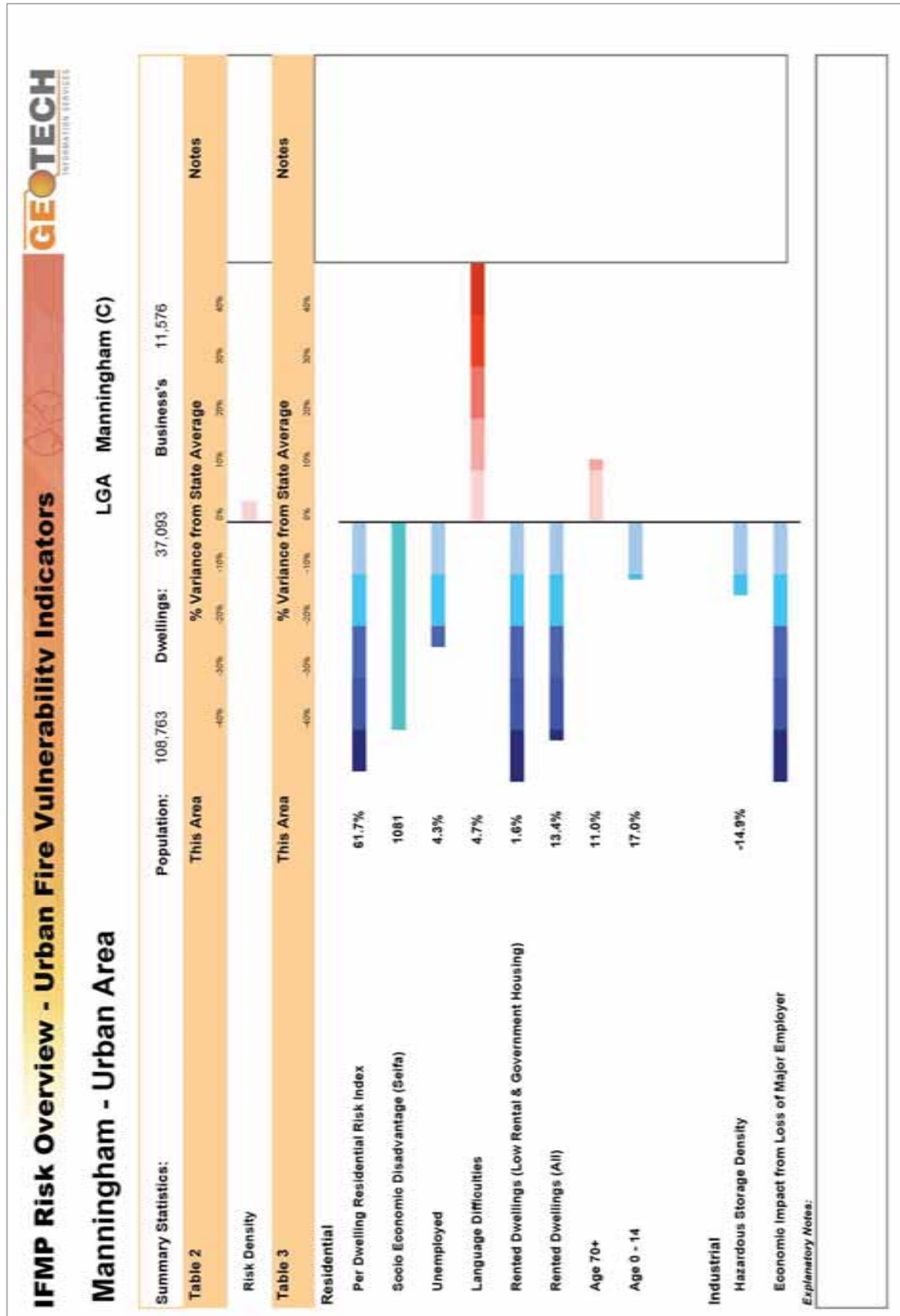
The Multi Agency Action Plan will be updated to address risk from structure fire in a future iteration of this MFMP once the Urban Fire Risk Profiling (UFRP) tool is developed and ready for use. Existing treatment works have been carried over from the MFPP as an interim measure. (MCC 2002, Municipal Emergency Management Plan and City of Manningham Planning Scheme)

Vulnerabilities

This plan considers vulnerability indicators in the urban environment through a process of comparison against state averages (Figure 2). There were a total of 10 indicators assessed including, residential risk, socio economic disadvantage, unemployed, language difficulties, rented dwellings (low rental & government housing), rented dwellings (all), age 70+, Age 0-14, hazardous store density and economic impact for loss of major employer. Of these only two indicators displayed a variance over the state average. Persons with language difficulties were found to be the most significant vulnerable group with those over the age of 70 also at risk from fire in the urban environment (Geotech Information Services (2010).



Figure 2: IFMP Risk Overview – Urban Fire Vulnerability Indicators



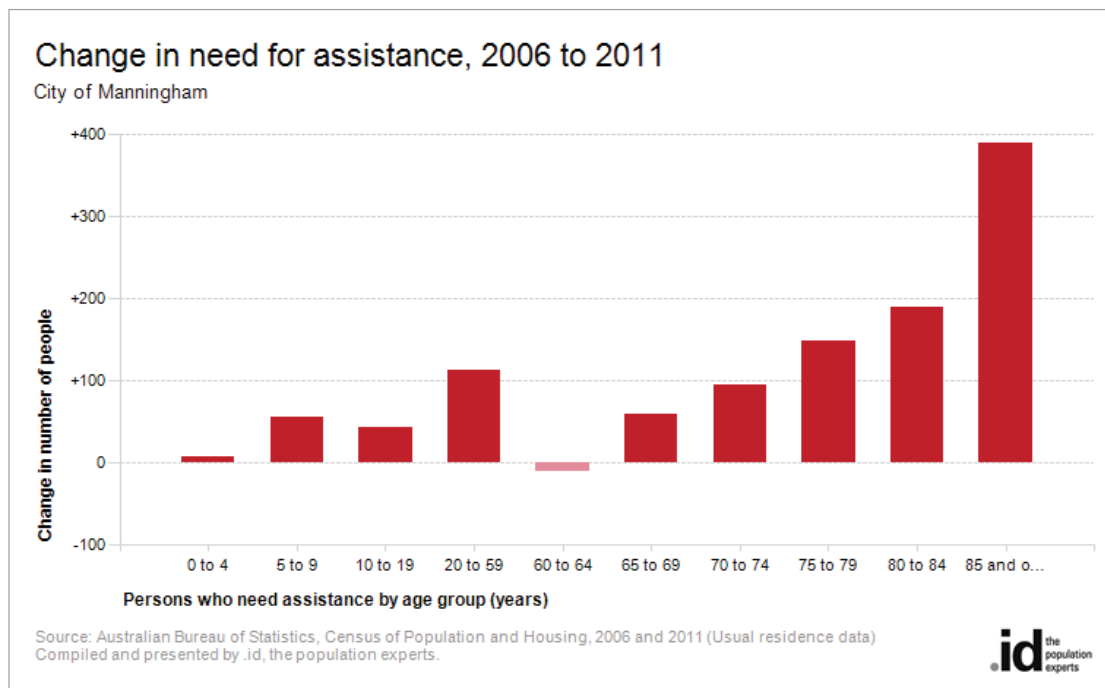
Implications for the Vulnerable People in Emergencies Program

In regard to bushfire, the 2009 Victorian Bushfires Royal Commission recommended that MEMPs contain information relating to vulnerable people. The Manningham MEMP contains information about community organisations already working with vulnerable individuals at the local level and a register of facilities where vulnerable people are likely to be situated – for example aged care facilities, hospitals, schools and child care centres.

Victoria Police is the lead agency responsible for facilitating evacuations of vulnerable persons.

5,021 people or 4.5% of the population in the City of Manningham report needing help in their day-to-day lives due to disability.

Need for assistance with core activities							
City of Manningham	2011			2006			Change
Assistance needed by age group (years)	Number	% of total age group	Greater Melbourne	Number	% of total age group	Greater Melbourne	2006 to 2011
0 to 4	46	0.9	1.0	38	0.7	0.8	+8
5 to 9	145	2.4	2.5	90	1.4	2.0	+55
10 to 19	218	1.5	2.0	175	1.2	1.5	+43
20 to 59	846	1.5	2.0	734	1.3	1.8	+112
60 to 64	225	3.2	6.1	236	3.3	5.6	-11
65 to 69	300	4.7	7.8	241	3.9	6.9	+59
70 to 74	441	8.0	11.6	346	7.7	10.7	+95
75 to 79	677	16.6	18.7	529	15.5	16.9	+148
80 to 84	822	28.0	28.9	633	28.1	27.9	+189
85 and over	1,301	50.9	48.4	911	46.4	46.9	+390
Total persons needing assistance	5,021	4.5	4.5	3,933	3.6	4.0	+1,088



In Warrandyte - Warrandyte South there are 586 carers providing unpaid assistance to a person with a disability, long term illness or old age. There are 128 people recorded in the 2011 census that required assistance with core activities.

Need for assistance with core activities							
Warrandyte - Warrandyte South	2011			2006			Change
Assistance needed by age group (years)	Number	%	Manningham	Number	%	City of Manningham	2006 to 2011
Total persons needing assistance	128	2.2	4.5	112	1.9	3.6	+16
Total persons not needing assistance	5,576	95.1	92.3	5,617	94.0	92.3	-41
Not stated	157	2.7	3.2	247	4.1	4.1	-90
Total population	5,862	100.0	100.0	5,977	100.0	100.0	-115

(AUSTRALIAN BUREAU OF STATISTICS, CENSUS OF POPULATION AND HOUSING 2006 AND 2011. COMPILED AND PRESENTED BY .ID, THE POPULATION EXPERTS).

FOR MORE INFORMATION ON MANNINGHAM DEMOGRAPHICS GO TO: [HTTP://PROFILE.ID.COM.AU/MANNINGHAM](http://profile.id.com.au/manningham)

3.5 Specific risk locations

The Manningham municipal area contains a number of specific assets at risk from fire in both the urban and bushfire risk environments. These independent assets are listed separately from grouped assets covered by precincts, urban risk environments and vulnerabilities.

Assets at risk from bushfire have been identified through the Manningham MFMP and are listed in the Victorian Fire Risk Register (VFRR). The VFRR is a program that assesses risk systematically through the identification of assets at risk from bushfire. The VFRR identifies in particular, transmission lines, schools, retirement villages, terminal stations, holiday parks, scout camps and community halls that are all deemed to be at risk from bushfire (Appendix A.1).

The Urban Fire Risk Profiling (UFRP) tool also provides a list of specific assets that are exposed to the risk of fire in urban environments across the Manningham municipal area. Detailed lists are contained in the UFRP, Manningham area and surrounds shown in Appendix A.2 (Geotech Information Services 2010).

A modified list that considers likelihood and consequence is included in Section 5.3 Fire Risk Management Strategies. Further work will be carried regarding specific assets in the urban environment in future iterations of the MFMP.

3.6 Future fire management implications

Doncaster Hill

Covering 58 hectares centred on the intersection of Doncaster Road and Williamsons/Tram Road in Doncaster, Doncaster Hill is set to be the civic heart of Manningham. The Doncaster Hill Strategy is a 20-year strategy adopted by Manningham City Council in February 2002. It is the City Council's response to increased demand for more appropriate, sustainable and diverse housing options that accommodate the municipal area's changing demographic and social needs. Doncaster Hill is envisaged to be a mixed-use sustainable urban village with a strong sense of place and a community-focused lifestyle. Through this strategy Council aims to alleviate concerns over urban growth spreading further into poorly serviced and more sensitive urban and non-urban areas, whilst capitalising on the accessibility, servicing and extraordinary views of the location. The strategy plans to attract 4,000 new residential apartments and five million extra visitors a year.

Manningham Green Wedge

Manningham's eastern areas are covered by vegetation, environmental and landscape-based overlays, which seek to protect native vegetation. The Manningham Green Wedge is one of 12 such zones in Victoria. These are areas of environmental significance where efforts are made to protect and enhance agricultural, environmental, historic, landscape or recreational values, or resources such as minerals or stone. A map of the Green Wedge is in Appendix E.

The Manningham Green Wedge includes parts of the non-urban suburbs of Warrandyte, Warrandyte South, Donvale, Templestowe and Park Orchards, and all of Wonga Park. To date, they have been protected from further subdivision by planning controls, in order to retain the rural character. Most of the Green Wedge area of Manningham also falls into a designated Bushfire Prone Area or Bushfire Management Overlay.

Bushfire Prone Areas (BPA)s and Bushfire Management Overlay (BMO)

Manningham residents can go online to find out if their property is within a designated BPA.

Go to: www.land.vic.gov.au

BPA is a state wide building control. Specific bushfire construction standards apply in designated bushfire prone areas in Victoria. These bushfire construction requirements are aimed at improving bushfire protection for residential buildings.

Bushfire Management Overlay (BMO) is a state wide planning and building control. Areas in the BMO are areas that have the highest fire risk and are likely to be particularly exposed to the impact of bushfire. The suitability of new development (including subdivision) in these areas must be fully considered before it proceeds.

More information on the BMO planning scheme maps can be found online at: www.dpcd.vic.gov.au/planningschemes

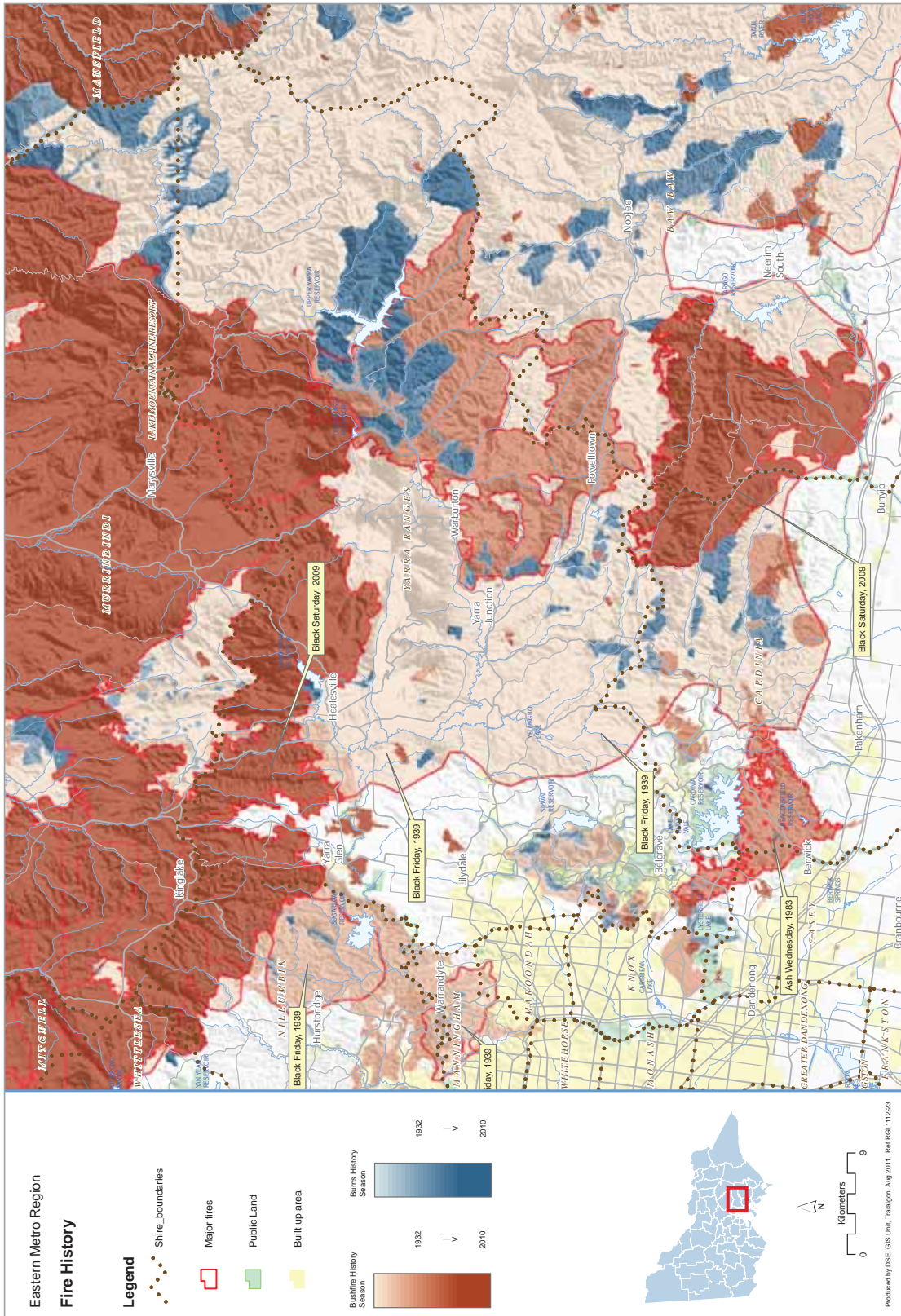
3.7 History of fire

Over the past 150 years there have been a number of major fires throughout the municipality, which have resulted in the loss of life and property. Bushfire seasons are generally restricted to the summer months during late December–February. The Fire Danger Period (FDP) was introduced to reduce the risk of fire, and usually enforced from late November to early April depending on weather conditions.

Month/Year	Fire Name
1991	Pound Bend (Warrandyte)
1969	Diamond Creek through Research to Warrandyte;
1962	St Andrews through to Warrandyte, Wonga Park
1939	Black Friday
1851	Black Thursday

In common with surrounding municipal areas, Manningham has also experienced significant structural and residential fires in recent history. Unlike its neighbouring municipal areas, Manningham lacks large industrial areas.

Map 3: Fire History of the Eastern Metropolitan Region



4. Municipal fire management objectives

Manningham MFMP chose to adopt some of the visions and values set out in Manningham City Council's 2009 Council Plan as their fire management objectives. Whilst linking into the overall visions and values of the Manningham City Council, they are also reflective of the key stakeholder agencies values and objectives for fire management.

4.1 Manningham MFMP objectives:

To effectively manage and reduce the risk of fire, with a view to protecting life and property and with due regard to the natural environment; and

To align and integrate existing fire management planning and practices across agencies and the community.

4.2 Purpose

The purpose of this MFMP is to benefit the people of Manningham by coordinating the planning and implementation of measures necessary to minimise the occurrence of unplanned bushfires, urban fires and incidents and mitigate their impact on the community.

Specific fire management objectives for the Manningham municipal area are:

- To reduce the occurrence of unplanned fires and incidents;
- To minimise the severity and impact of any fires and incidents on life, property and the environment in Manningham;
- To increase the preparedness and resilience of the community to fire and incidents; and
- To facilitate community recovery from any serious events, and to integrate fire management with broader emergency management planning in the City of Manningham.

This MFMP focuses on the prevention and community preparedness aspects of the above objectives. Response and recovery arrangements are found in the MEMPC and agency operational plans.

The MFMP is a subcommittee of the MEMPC, with overlapping membership of the committees and the two plans reference each other as appropriate.

4.3 Aligning with the Eastern Metropolitan Regional Strategic Fire Management objectives

Each RSFMPC across the state has responsibilities for setting regional objectives. This MFMP aligns with the Eastern Metropolitan RSFMP.

The Eastern Metropolitan RSFMPC endorses the State vision:

Fire management in the Eastern Metropolitan Region that delivers:

- Active participation of community, the sector and government working together in fire management planning to reduce the destructive impact of fire on communities and the environment.
- Communities that are resilient to the effects of fire;
- Greater understanding of the fire sector within the community; and
- Healthy natural, social, built and economic environments.

(IFMP State Fire Management Strategy 2009 p. 11)

The Eastern Metropolitan RSFMPC Mission is the RSFMPC's statement of intent:

'Agencies of the Eastern Metropolitan region working together with communities to reduce the impact of unplanned fire.'

The Eastern Metropolitan regional strategic fire management objectives were developed in line with the State fire management key themes; planning together; collaborative implementation; building knowledge; building capability; and using fire (State Fire Management Strategy, 2009, pp. 13-15).

The Eastern Metropolitan RSFMPC will work towards realising the vision and achieving their mission through the following seven key themes;

1. Committee becomes the driver (lead body) for fire management planning across the region.
2. Building and using knowledge.
3. Working with the community to manage fire.
4. Delivering cross tenure outcomes that address fire risk at a landscape and regional level.
5. Effective communications and marketing.
6. Continuous improvement.
7. Identifying and treating significant natural, social, built and economic environments at risk.

These key themes provided direction for the Eastern Metropolitan's RSFMPCs key themes and the objectives that specify how a particular area of concern will be addressed. The corresponding action or set of actions for each objective states how the objective is going to be achieved. This information is presented in the Eastern Metropolitan's RSFMP Action Plan (http://www.ifmp.vic.gov.au/images/plans/eastmetro/Eastern-Metro-Fire_Management-Plan-2011.pdf).

4.4 Broader purpose of the Manningham Municipal Fire Management Plan

The primary aim of the fire management plan is to create greater community awareness and communicate fire management information more effectively. Ultimately, the Manningham MFMP will share responsibility for implementing the strategies contained within the plan and create a safer municipal area through undertaking the following tasks:

- Ensure that plans and actions are in place (that responsible authorities are advised of actions which the committee deem necessary) for minimising the risk of an outbreak of fire or for suppressing any fire that may occur within the area (Section 55 of the CFA Act 1958);
- Develop programs that are relevant to the community;
- Measure fire safety outputs to assess the reduction in community vulnerability to fire;
- Engage community groups and businesses in ongoing dialogue about fire mitigation solutions including fire prevention activities; and
- Liaise with other agencies and committees to ensure integration and consistency of purpose.

4.5 Strategic directions

The strategic direction of the Manningham MFMP aligns with the State Fire Management Strategy (2009) which articulates the vision of future fire management in Victoria as fire management that delivers:

- Active participation of community, the industry and government, working together in fire;
- Fire management planning to reduce the destructive impact of fire on communities and the environment;
- Communities that are resilient to the effects of fire; and
- Greater understanding of the fire industry within the community, healthy natural, social, built and economic environments.

Also considered in the ongoing development of the fire management plan are the following broad strategy documents:

“Living with fire”-Victoria’s Bushfire Strategy
<http://www.justice.vic.gov.au>**“Bushfire Safety”**

“Policy Framework”, (Fire Services Commissioner)
<http://www.firecommissioner.vic.gov.au>

“Making Victoria Fire Ready”, (Implementing Governments response to 2009 VBRC)
<http://www.cfa.vic.gov.au>

“National Strategy for Disaster Resilience”,
Council of Australian Governments
<http://www.coag.gov.au>

4.6 Links to other business planning and programs

Important linkages are:

- The State Fire Management Strategy (2009)
- Eastern Metropolitan Regional Strategic Fire Management Plan (2011)
- Manningham City Council MEMP
- Manningham City Council, Bushfire Prevention & Preparedness Plan (BPPP)
- DSE Fire Protection Plan
- DSE Fire Operation Plan
- United Energy Bushfire Mitigation Strategy
- SP Ausnet Bushfire Mitigation Strategy
- Vic Roads – Roadside Fire management strategy
- Neighbouring municipalities fire management plans
- VFRR
- UFRP tool
- Hazard Tree/Electric Line Clearance Program

Other linkages occur through alignment to organisational business planning cycles, agreed data sharing protocols and common risk assessment methodologies.



Photo supplied by MFB

5. Fire risk management strategies

Manningham MFMPC have developed and implemented this plan to reduce the number and the severity of fires within the municipal area with the aim of creating a safer community.

5.1 Risk identification

This plan assesses risk in accordance with the methodology described in AS/NZS ISO 31000:2009.



Photo supplied by Manningham City Council

The MEMPC and MFMPs have utilised tools based on ISO 31000: 2009 to inform this plan.

These tools include:

Community Emergency Risk Management (CERM) and Community Emergency Risk Assessment (CERA)

This is a method of managing municipal wide risks. This process has identified bushfire, structural fire and hazardous material release as being significant risks in Manningham. Further information can be found at: <http://www.ses.vic.gov.au/>

Victoria SES is currently reviewing and improving this process which in future will be known as Community Emergency Risk Assessment (CERA). Members of the Manningham MEMPC are involved in the development of this tool.

Road Bushfire Risk Assessment Guidelines (DSE, 2009)

The purpose of this guideline is to:

- Confirm road bushfire management objectives;
- Outline processes for assessing risk in regards to each objective;
- Determine the priority for bushfire mitigation works on particular roads; and
- Provide guidance on selecting appropriate risk treatments.

Further information can be found at: http://www.dse.vic.gov.au/__data/assets/pdf_file/0010/135946/VicRoads-Bushfire-Risk-Assessment-Guideline.pdf

Roadside Vegetation Management for Bushfire Risk Mitigation Purposes (DSE, Feb 2012)

The purpose of this guideline is to assist VicRoads and local councils to determine if works involving the removal of native vegetation for bushfire mitigation are exempt from planning scheme requirements under clause 58.02 of the Victoria Planning Provisions (Roadside Works for Bushfire Purposes). The guideline is also designed to assist road mangers to work through a risk assessment process as required by the new exemption.

Further information can be found on the Department of Sustainability and Environment website at <http://www.dse.vic.gov.au/>

Code of Practice for Bushfire Management on Public Land (DSE, Jun 2012)

The Code of Practice for Bushfire Management on Public Land establishes the framework for bushfire management (including planned burning and bushfire response) on Victoria's public land.

Victorian Fire Risk Register

The VFRR is a systematic process that utilises the expertise and local knowledge of a range of organisations and stakeholders in identifying locations and assets at risk from bush or grass fires, then assessing the level of risk and assigning a range of treatments to manage/mitigate the risk. Stakeholders include representatives from Manningham City Council, CFA, MFB, ParksVic, DSE, VICPOL, Melbourne Water and others.

Under the VFRR process, assets are grouped into several broad categories – *Human Settlement, Economic, Environmental and Cultural Heritage* and include residential and commercial properties at risk of bushfire; key infrastructure such as transmission lines, communication towers and water storage facilities; and any environmental or cultural assets.

Asset Category	Asset sub-category
Human Settlement	Residential, Special Fire Protection, Other
Economic	Agriculture, Commercial , Infrastructure, Tourist & Recreational, Mines Commercial Forests, Drinking Water Catchments
Environmental	Locally Important, Endangered, Vulnerable
Cultural Heritage	Aboriginal Significance, Non Indigenous, Other

Under each category, locations and assets are identified and their level of risk assessed based on a range of inputs including proximity to flammable vegetation; vegetation type; slope, frequency of fires; and the probability of a fire igniting on an extreme fire danger day with a fire danger index rating of 100 or more.

The VFRR broadly considers the impact of ember attack on property. Embers mostly occur close to the source of a fire, and are the result of wind-borne burning vegetation being carried away from flames before it is fully combusted.

Research has shown that embers will travel between 50 and 300 metres ahead of the fire front (McAnaney, J. and Chen, K, 2010) and that any impact on the more urbanised parts of the municipal area is minimal. Ember attack is more likely when communities are located within 200 metres of native vegetation/forest.

The primary output of the VFRR is a Bushfire Risk Register table. This contains the risk assessments for a specific location/asset with risk descriptors of low, medium, high, very high and extreme. The Register also assigns a priority risk rating to each asset to assist in prioritising risk treatments. The highest priority risk is given 1A rating, the lowest a rating of NA (Need for action is unlikely).

VFRR also provides a list of treatment/mitigation actions per each asset location (along with the responsible agency). Treatments may include prevention works such as fuel reduction burning, roadside vegetation management, grass slashing and property inspections or fire preparedness initiatives—such as development of personal bushfire plans, use of CFA’s Home Bushfire Advice Service and provision of fire safety information through the media and the fire agencies during the summer fire season.

Complementing this work, VFRR output maps are available to inform and provide a spatial overview of localities with an identified bushfire risk. All this information is then compiled and inserted into a Multi Agency Action Plan, a live document detailing all agency works /treatments against the identified risks (Appendix B).

It is then the role of the MFMPC to review the Action Plan and determine if the risk ratings are appropriate or if new assets need to be identified and placed on the Register. It also considers all treatment/mitigation works to determine if they are suitable or if additional works need to be undertaken.

No one risk management tool or combination of tools will be enough to manage the fire risk in Manningham. Effective fire management will require the input of local knowledge attained from committee and community members. This plan displays the identification of risk in two ways. It addresses:

- Generalised risks that can be treated through numerous treatment programs targeting specific precincts or risk density locations in more urbanised areas; and
- A range of site-specific locations with treatments to reduce specific risks within the municipal area.

As Manningham is a municipal area that has both urban and rural environments it is important to consider all fire risks across the area. As such this plan uses precincts and the VFRR for bushfire risk assessment; and the UFRP tool for the assessment of urban risk and vulnerabilities.

Both of these risk assessment products:

- Are generally consistent with the principles of ISO 31000;
- Identify risk environments relevant to either the Urban or Rural environment;
- Identify high risk locations through the differentiation of risk groupings or densities; and
- Identify site specific locations requiring analysis and treatment application.



Photo supplied by Manningham City Council

5.2 Precincts

The Manningham municipal area contains a number of precincts. Precincts are a form of categorisation developed by CFA and based on logical, geographic descriptions of risk that encompass all land and development (CFA 2008). They provide consistent first level community risk assessment.

Six precinct types have been defined and are detailed in Table 1. Their relative susceptibility to the hazards of bushfire, structure fire and HAZMAT is shown in Figure 3. All of these precinct types, except for farming and rural living, are found in the City of Manningham. Their geographic distribution is shown in Map 4.

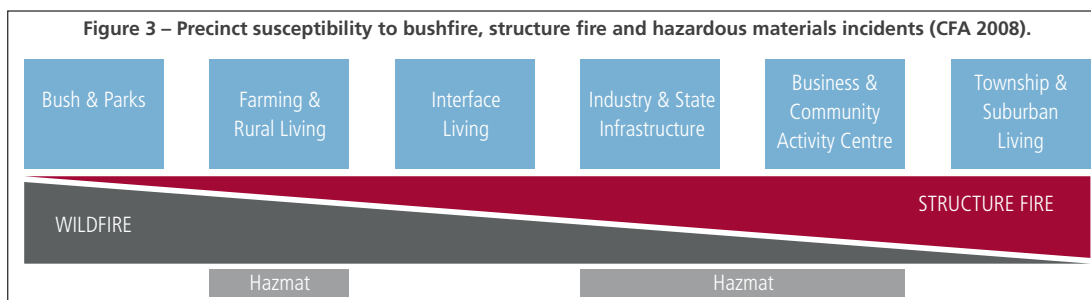
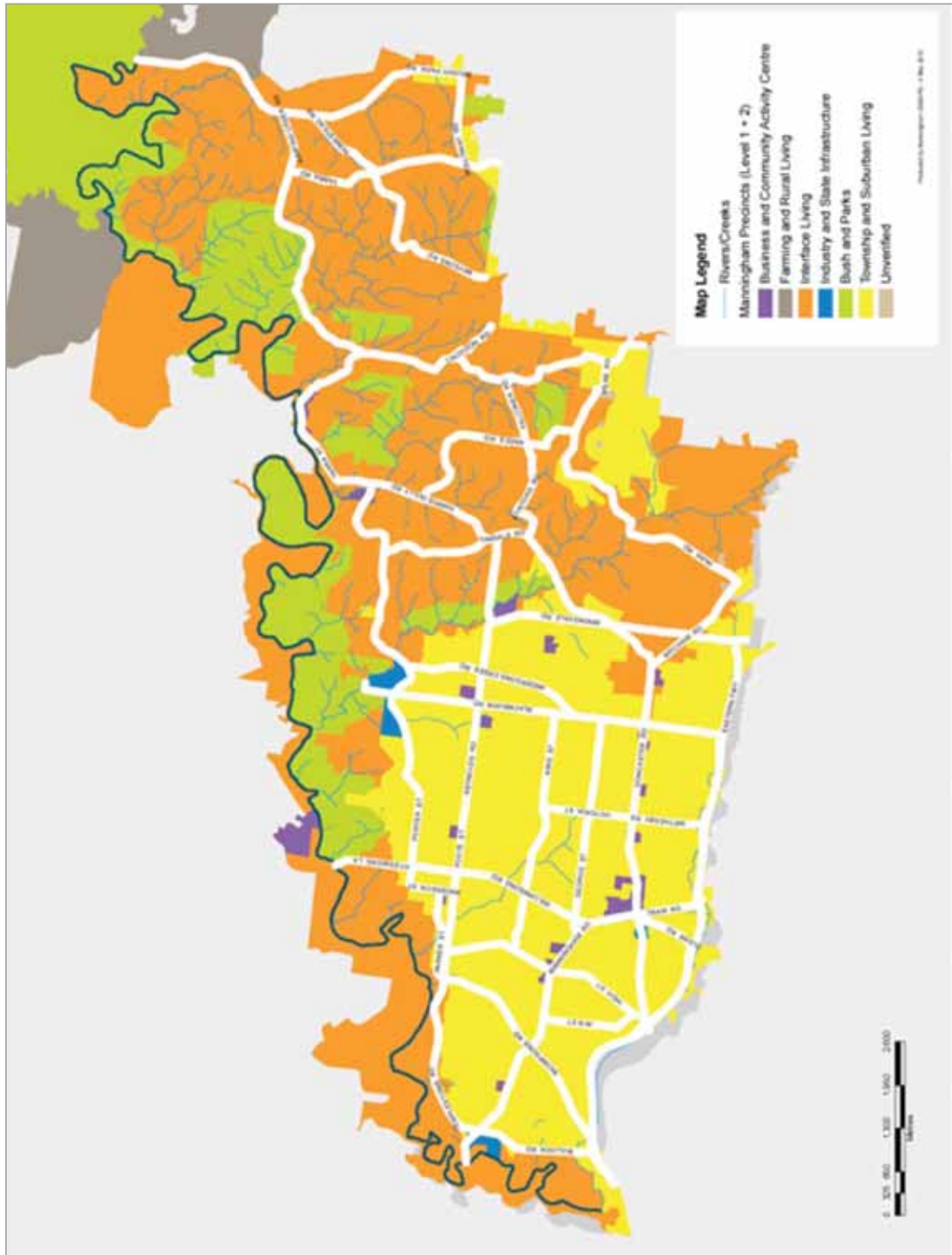


Table 1 – Precinct descriptions

Precinct	Description
Business & Community Activity Centre	Area with significant community functions such as commercial/retail, entertainment and recreation. It is commonly made up of the public assembly and commercial risk environments. Examples of these include, but are not limited to, shopping complexes, significant shopping strips, central business districts of large regional centres and transport terminals. Business and Community Activity Centre precincts provide the community with a significant employment function mainly in the retail, financial, government and non-government service sectors.
Farming & Rural Living	This includes the agricultural risk environment and the natural risk environment where it interacts with farming or rural living areas. It covers all property that is used for the primary production of plant and animal material such as crops, pastures, softwood, hardwood and pulp plantations, plus associated structures such as hay, equipment, shearing, poultry and dairy, low-density housing and accommodation for live-in transient workers. It also includes the infrastructure used to support the precinct. The rural living component includes the farming community as well as those living in the rural environment and/or maintaining a farm for lifestyle purposes rather than as a source of income.
Industry & State Infrastructure	Areas used for any part of the manufacture, assembly or production of a product, or the processing of either a primary and/or natural resource. Sites within this precinct type include, but are not limited to, industrial estates, factories, saw mills, warehouses, petrochemical depots, mining, quarries, refineries and power stations. It also contains the infrastructure used to support the precinct along with associated commercial enterprises such as trade supply outlets, mail centres and wholesale outlets where they are contained within the industry and state infrastructure precinct.
Interface Living	Areas where a predominantly urban population is situated directly adjacent to, or intermixed with significant areas of forest and scrub. The predominant focus is on the residential risk environment, where it intersects with the natural environment. However, it also includes the infrastructure to support the residential environment such as electricity transmission infrastructure and roads. Schools and commercial enterprises may also be included where their concentration is not sufficient to create a separate business and community activity centre precinct.
Township & Suburban Living	Urban residential areas. Dwellings might include freestanding homes, flats, units and high-rise apartments. The precinct type includes housing estates, the suburbs of Melbourne and residential areas of provincial townships. It predominantly consists of the residential risk environment, but also includes the infrastructure used to support the precinct such as transport services, utilities/services, schools and isolated commercial enterprises (e.g. milk bars and service stations) where their concentration is not sufficient to create a separate business and community activity centre precinct. Is unlikely to have a significant bushfire risk.
Bush and Parks	Areas where the natural risk environment is predominant. In general these are large areas most likely to be inaccessible; however infrastructure such as roads, powerlines and dams may fall within the precinct. The number of structures and community activity locations such as camping grounds are minimal, although isolated dwellings or small remote hamlets may exist within the precinct. If there is a significant population, however, it may be better classified as an interface living precinct.

Map 4: Distribution of precincts in the City of Manningham (MFB area is Level 1, CFA area is Level 2).



Urban Fire Risk Profiling (UFRP) Tool

The UFRP tool was originally developed for the MFB to assist in targeting community programs and risk reduction strategies along with assisting MFB with strategic planning and location of fire stations.

- (a) The State Fire Management Planning Committee (SFMPC) has agreed to support further development of the UFRP so it can be used across the state for IFMP. The UFRP will be expanded to cover urban CFA areas. When available the Urban Fire Risk Profiling (UFRP) tool will provide a list of specific assets that are exposed to the risk of fire in urban environments across the Manningham municipal area. Detailed lists are contained in the UFRP, Manningham area and surrounds (Geotech 2010). A modified list that considers likelihood and consequence is included in the fire management treatments section of this plan.
- (b) The UFRP tool will use a systematic process to identify the nature, degree and geographic distribution of urban risk throughout Victoria. It provides a consistent first level community risk assessment approach that provides a layer of information and mapping data specifically focused on urban fire risk. This tool can assist in the identification of potential risk and factors influencing vulnerabilities in the community however does not consider the likelihood of fire ignitions.

The UFRP tool will use a standard environment segmentation to assess fundamentally different risks; Table 2 explains the environments treatments can be applied to.

Table 2 - Environment Segmentation Used for the UFRP tool

Environment	Environment Includes
Residential	Houses, flats and apartments (single dwelling)
Residential (group)	Boarding houses, back packers, hostels, motels, hotels, caravan and tourist parks, serviced apartments
Commercial	Offices (private and public sector), retail
Industrial	Manufacture, wholesale, storage and waste
Infrastructure	Transport (non vehicle), power supply, water (fresh and waste), gas pipeline
Construction	Property under construction or redevelopment
Healthcare, Special accommodation	Aged care, bush nursing, correctional, disability services, medical services, mental health, private and public hospitals
Education, Community and Public Assembly	Childcare, schools, education, places of worship, function centres, museums, stadiums, cinemas, theatres
Transport	Vehicles

The UFRP tool contains a number of maps that reflect risk distribution and density in the aforementioned environment segments and vulnerability indicators such as socio-economic disadvantaged, rented dwellings, children aged 0-4, persons aged 70+ and those from culturally and linguistically diverse communities. It also provides point data that identifies specific buildings and hazardous materials storage sites that are deemed high risk. These maps assist stakeholders in choosing relevant treatments and delivering programs in the highest risk locations.

5.3 Risk assessment

This MFMP identifies fire, including structural and non-structural, as a risk and rates it extreme across the municipal area as a whole.

The Manningham MEMP identifies dangerous goods/hazardous materials as a risk and rates it Moderate across the municipal area as a whole.

This risk assessment (Table 3) focuses the assessment on each of the precinct types rather than on the municipal area as a whole. The risk posed by structure fire, hazardous materials incidents and bushfire to the safety of Manningham was assessed in terms of likelihood and consequence for each of the precincts. This provides a fire risk profile for the municipal area.

Qualitative risk analysis was conducted using the likelihood-consequence matrix contained in the *Emergency Risk Management - Applications Guide* (EMA 2000) produced by Emergency Management Australia, which is based upon *ISO 31000:2009 Risk Management – Principals and guidelines*.

All risks rated as moderate or above are explicitly addressed by strategies in this MFMP. This high-level risk assessment is complemented by a number of risk assessment tools that quantify and map the distribution of particular risks or hazards across the municipal area and which are used in more detailed targeting of individual treatment programs. These include the VFRR that details the risk from bushfire across the municipal area and the UFRP tool.

Table 3 – City of Manningham fire risk profile

Risk Environment		HAZARD		
		Bushfire	Structure Fire	HAZMAT
Bushfire Risk Environment (Precincts)	Township and Suburban Living	Low	Extreme	Moderate
	Interface Living	Extreme	Extreme	Moderate
	Business and Community Activity Centres	Extreme	Extreme	Moderate
	Bush and Parks	Extreme	Low	Low
	Industry and State Infrastructure	Extreme	High	Moderate
Urban Risk Environments (URFP)	Residential	Low	High	Low
	Residential (Group)	Low	Extreme	Low
	Commercial	Low	High	Low
	Industrial	Low	High	Moderate
	Infrastructure	Low	Low	Moderate
	Construction	Low	Moderate	Low
	Healthcare, Special accommodation	Low	High	Moderate
	Education, Community and Public Assembly	Low	Moderate	Low
	Transport	Low	Low	Moderate
Vulnerabilities (UFRP)	Aged 70+	Extreme	Extreme	Low
	Language Difficulties	Extreme	Extreme	Low

5.4 Victorian Fire Risk Register – Bushfire (VFRR-B)

The VFRR-B is a systematic process that utilises the expertise and local knowledge of a range of professionals and stakeholders in identifying locations and assets at risk from bush or grass fires, then assessing the level of risk and assigning a range of treatments to manage / mitigate the risk. Stakeholders include representatives from Manningham City Council, CFA, MFB, ParksVic, DSE and others.

Within each VFRR asset category are sub-categories listed in Table 4.

Table 4 – VFRR Asset Categories

Asset Category	Asset sub-category
Human Settlement	Residential, Special Fire Protection, Other
Economic	Agriculture, Commercial , Infrastructure, Tourist & Recreational, Mines Commercial Forests, Drinking Water Catchments
Environmental	Locally Important, Endangered, Vulnerable
Cultural Heritage	Aboriginal Significance, Non Indigenous, Other

Under each category, locations and assets are identified and their level of risk assessed based on a range of inputs including proximity to flammable vegetation; vegetation type; slope, frequency of fires; and the probability of a fire igniting on an extreme fire danger day with a fire danger index rating of 100 or more.

The primary output of the VFRR-B is a bushfire risk register (Appendix A1). This contains the risk assessments for a specific location/asset with risk descriptors of low, medium, high, very high and extreme. The Register also assigns a priority risk rating to each asset to assist in prioritising risk treatments. The highest priority risk is given 1A rating, the lowest a rating of NA (Need for action is unlikely). The tool also produces maps (Appendix E) that graphically illustrate where at risk assets are located.

Assets at risk from bushfire have been identified by work of the MFMPC and are listed in the VFRR Manningham. The VFRR is a program that assesses risk systematically through the identification of assets at risk from bushfire. The VFRR identifies in particular transmission lines, schools, retirement villages, terminal stations, holiday parks, scout camps and community halls that are at risk from bushfire (Appendix A).



Photo supplied by MFB

5.5 Community Information Guides (formerly Township Protection Plans TPPs)

Community Information Guides provide a planned response for both emergency services and the community to a bush/grass fire within close proximity to a township, which has the potential to impact on the local community.

They provide township-specific information to enable residents/visitors and emergency services to make a quick, informed and planned response to a fire.

More information can be found at the CFA website: www.cfa.vic.gov.au

In the Manningham municipal area, the township of greater Warrandyte and surrounds is deemed as a high-risk community and therefore has a Community Information Guide.

The Warrandyte & North Warrandyte Community Information Guide is available online at:

<http://cfaonline.cfa.vic.gov.au/mycfa/Show?pagelid=publicTownshipProtectionPlans#PR>

Further CIG's are being developed for Wonga Park and South Warrandyte as part of the ongoing municipal fire management planning process.

5.6 Neighbourhood Safer Places

Neighbourhood Safer Places- Places of last Resort (NSP – PLR) are an area or premises that may, as a last resort, provide some sanctuary from the life threatening effects of a bushfire (i.e. direct flame contact or radiant heat). Specific locations for NSP have been identified for the Manningham municipal area. This information is in Appendix C3.

For more information on NSP visit, www.cfa.vic.gov.au

5.7 Community Fire Refuges

A community fire refuge is a designated building open to the public that can provide short term shelter from the immediate life-threatening effects of a bushfire event. There are strict standards for the design and construction of community fire refuges, which have been incorporated into the Victorian Building Regulations.

Community Fire Refuge information is attached in Appendix C4.

5.8 Hazardous trees

The Electricity Safety Act 1998 (Victoria) (ES Act) Section 86 provides that a municipal council must specify:

- (a) procedures and criteria for the identification of trees that are likely to fall onto, or come into contact with, an electric line (hazard trees);
- (b) and procedures for the notification of responsible persons of trees that are hazard trees in relation to electric lines for which they are responsible.

The Hazardous Tree Plan is available online through the Manningham City Council Website (Appendix C.1).

This document outlines the management of municipal street trees within designated areas of both Low and High bushfire risk.



Photo supplied by Manningham City Council

6. Plan reporting and review

6.1 Plan endorsement and adoption

The MFMP shall draft a MFMP and seek endorsement, by signature, of the draft plan from the committee and, where appropriate, non-committee members with responsibilities and accountabilities under the plan. Following this process, the MFMP will recommend the MFMP to the MEMPC for endorsement. Once endorsed by the MEMPC, the plan will be sent to the Eastern Metropolitan RSFMP for comment, prior to recommendation to the Manningham City Council for adoption.

The MFMP as adopted by Council, will be deemed to meet the requirement for a municipal fire prevention plan under s. 55A(1) of the Country Fire Authority Act, provided that it contains the provisions as set out in s. 55(A)2. For other councils, audit arrangements will be determined prior to the initial audit of the MFMP.

6.2 Plan audit and review

The plan has a three year lifespan based on current audit requirements contained within Section 55B of the CFA Act. It is acknowledged that the audit process and planning cycles may change as the IFMP framework and planning processes evolve.

6.3 Reporting on plan outcomes

Ongoing monitoring and annual review is essential to ensure that the MFMP remains relevant and up to date. The Multi Agency Action Plan will be a standing agenda item at MFMP meetings and will be reported on quarterly by agencies to the MFMP as ongoing treatment works are completed. The quarterly reports will then be presented to the Eastern Metropolitan RSFMP.

This MFMP will be reviewed and amended:

- Following significant incidents, if required
- With changes in local demographics and local risk
- As directed by the State or Regional Fire Management Planning Committees
- As required by legislation.



Photo supplied by Manningham City Council

Appendices

APPENDIX A

Appendix A.1 – Victorian Fire Risk Register – Bushfire (VFRR-B)

CFA (2012) Victorian Fire Risk Register, Manningham City Council.

Asset name	Asset Location	VFRR Map Ref.	VFRR Risk	VFRR Priority
Human Settlement - Residential				
Warrandyte	Warrandyte	43011	Extreme	1B
Pound Bend	Warrandyte	43012	Extreme	1B
Minter CRT	Warrandyte	43017	Extreme	1B
Wonga Park West	Wonga Park	43019	Extreme	1B
Mullum Mullum North	Donvale	43013	Very High	2A
Brysons RD	Wonga Park	43041	Very High	2A
Yarra RD	Wonga Park	43010	High	3A
100 Acres	Park Orchards	43014	High	3A
The Domain	Warrandyte	43015	High	3A
Mullum Mullum South	Donvale	43016	High	3A
Homestead RD	Wonga Park	43040	High	3A
Wonga Park Village	Wonga Park	43043	High	3A
Lower Homestead RD	Wonga Park	43045	High	3A
Green Ridge	South Warrandyte	43018	Medium	4
Templestowe RD Doncaster	Doncaster	43024	Medium	4
Brushy Park and Holloway RD	Brushy Park and Holloway RD	43028	Medium	4
Wonga Park Village East	Wonga Park	43038	Medium	4
Alexander RD	Warrandyte	43048	Medium	4
Candlebark Park	Templestowe	43049	Medium	4

Human Settlement - Special Fire Protection				
Clifford Park Scout Camp	7 Clifford Dr, Wonga Park	43001	Extreme	1B
Melbourne Christian Fellowship	70 Holloway Rd, Wonga Park	43004	Extreme	1B
Yarra River Bank	Warrandyte	43020	Extreme	1B
Lower Homestead Rd - Yarra River	Wonga Park	43023	Extreme	1B
Discovery Holiday Park - Crystal Brook	182 Warrandyte Rd, East Doncaster	43031	Extreme	1B
Yarra Brae Horse Trails	Yarra Brae	43039	Extreme	1B
Jumping Creek Reserve	Warrandyte State Park	43046	Extreme	1B
Time Out Childcare Centre	100 Deep Creek Rd, Doncaster East	43053	Extreme	1B
Whitefriars College	156 Park Rd, Donvale	43008	Very High	2A
Wonga Park Cricket and Tennis Club	Launders Ave, Wonga Park	43025	Very High	2A
The Village Centre Shops	Wonga Park	43026	Very High	2A
Wonga Park Community Hall	Old Yarra Rd, Wonga Park	43027	Very High	2A
Warranvale Retirement Home	314 Reynolds Rd, Donvale	43032	Very High	2A
Donvale Christian College	155 Tindals Rd, Donvale	43033	Very High	2A
Andersons Creek Primary School	Drysdale Rd, Warrandyte	43036	Very High	2A
Warrandyte Primary School	Forbes St, Warrandyte	43037	Very High	2A
On Luck Chinese Retirement Village	Tindals Rd, Donvale	43042	Very High	2A
Warrandyte Child Care Centre and Preschool	2 Masonic Ave, Warrandyte	43044	Very High	2A
Kellybrook Winery and Restaurant	Wonga Park	43047	Very High	2A
Pound Bend Picnic Ground	Warrandyte	43050	Very High	2A
Alfreds Homestead	Warrandyte-Ringwood Rd, Warrandyte	43055	Very High	2A
Potters Receptions	Warrandyte	43056	Very High	2A
Warran Glen Nurseries	Warrandyte-Ringwood Rd, Warrandyte	43057	Very High	2A
Wonga Park Primary School	Dudley Rd, Wonga Park	43002	High	3A
Wonga Park Community Centre	Wonga Park	43003	High	3A
Longridge Camping Ground	Warrandyte	43051	High	3A
Former Warrandyte South Primary School	58-64 Hall Rd, Warrandyte South	43005	Medium	4
Coptic Orthodox Diocese Melbourne Head Quarters	Park Rd, Donvale	43058	Medium	4
St Annes Primary School	60 Knees Rd, Park Orchards	43006	Low	NA
Warrandyte High School	Cnr Warrandyte and Alexander Rd, Warrandyte	43030	Low	NA
Park Orchards Primary School	Bowmore Ave, Park Orchards	43034	Low	NA
Park Orchards Kindergarten and MCH	570 Park Rd, Park Orchards	43035	Low	NA
Warrandyte and District Preschool	2 Taroona Ave, Warrandyte	43052	Low	NA
Gumnut Gully Preschool	Larnoo Dr, East Doncaster	43054	Low	NA

Economic - Agricultural				
Kellybrook Winery	Fulford Rd, Wonga Park	43206	Medium	4
Economic - Infrastructure				
Templestowe Terminal Station	East Doncaster		Very High	2A
ROTS-TSTS 220KV Transmission Line	Templestowe		Very High	2C
Ringwood Warrandyte Rd	Ringwood to Warrandyte		Very High	2C
ROTS-TTS 220KV Transmission Line	Warrandyte		Very High	2C
ROTS-SMTS 500KV Transmission Line 3	Warrandyte		Very High	2C
East Link Tunnel Deluge System	Huggins Rd		High	3A
CFA Filling Point	Park Orchards		High	3A
Craig Rd WPS 095	Ringwood		High	3D
Knees Rd PRV WBS 016	Park Orchards		High	3D
East Link	Frankston to Mitcham		Medium	4
Warrandyte Fire Station	Warrandyte Rd, Warrandyte		Low	NA
South Warrandyte Fire Station	SouthBrumbys Rd, Warrandyte		Low	NA
TSTS-TTS 220KV Transmission Line	Doncaster		Low	NA
Economic - Tourist and Recreational				
There are no listed assets in Manningham for this category				
Environment - Locally Important				
There are no listed assets in Manningham for this category				
Cultural - Non Indigenous				
Pontville	Warrandyte	43601	High	3A
Heidi I and II	7 Templestowe Rd, Bulleen	43603	High	3A
Solar House*	Rosco DRV, Templestowe	43604		
Pound Bend*	Pound Bend Rd, Warrandyte	43605		
Former Naughton House and Rifle Factory*	Hutchinson Ave, Warrandyte	43606		
Inge and Graham King House*	Drysdale Rd, Warrandyte	43607		
Former Warrandyte Wine Hall* 'Folkart'	Yarra St, Warrandyte	43608		
Westerfolds Homestead	Templestowe	43609	High	3A
Menlo*	Atkinson St, Lower Plenty	43610		
Friedensruh*	Waldau Crt, Doncaster	43611		
*CULTURAL HERITAGE - to be assessed by AAV and Heritage Victoria				

APPENDIX A

Appendix A.2 – Structure Fire Risk Management Register

A Structure Fire Risk Management Register will be included in a future iteration of this plan once the UFRP tool is developed and ready for use. The UFRP data presented in this appendix is from the 2010 Geotech report.

Manningham Higher Risk Facilities - Residential (Group Accommodation)

Facility Type	Name	Address	Suburb	Postcode	Estimated Beds	Map Reference
Serviced Apartments	Eltham South Lodge	58 Kent-Hughes Rd	Eltham	3095	0	22B8
Bed & Breakfast/Guest House	Warrandyte Goldfields B & B	1-3 Whipstick Gully Rd	Warrandyte	3113	0	23E12
Bed & Breakfast/Guest House	Kembla Cottage	36-48 Tills Drv	Warrandyte	3113	0	23H11
Bed & Breakfast/Guest House	A Tudor Manor	55 Jumping Creek Rd	Wonga Park	3115	0	24G11
Bed & Breakfast/Guest House	Jacqui & Johns Bed & Breakfast	3 Inverberie Crt	Wonga Park	3115	0	24G11
Serviced Apartments	Australian Home Away	18 Reserve Rd	Wonga Park	3115	0	24K8
Bed & Breakfast/Guest House	Bellevue Bed And Breakfast	32 Columba St	Balwyn North	3104	0	32C12
Bed & Breakfast/Guest House	Mia'S Place	40 Ironbark Drv	Lower Templestowe	3107	0	33C9
Bed & Breakfast/Guest House	A Aaa Kook-aburra Corner Bed & Breakfast	19 Urwin St	Templestowe	3106	0	33D3
Hotel/Motel/Tourist Resort	Acom International Serviced Units	2 Alma Crt	Doncaster	3108	0	33G11
Caravan Park	Caravan Park	182-190 Heidelberg - Warrandyte Road	Warrandyte	3113	0	34F3
Hotel/Motel/Tourist Resort	Riverlea Estate	485 Warrandyte-Ringwood Rd	Warrandyte	3113	0	35J5
Camps	Haven Conference Centre Motel	70 Holloway Rd	Wonga Park	3115	0	36K6
Hotel/Motel/Tourist Resort	Hotel/Motel/Tourist Resort	845A-855 Doncaster Road	Doncaster	3108	4	47H1
Hotel/Motel/Tourist Resort	Tourist Resort Complex Motel	604-610 Middleborough Road	Blackburn North	3130	0	47H4
Serviced Apartments	Fully Furnished Accommodation	934-938 Doncaster Road	Doncaster East	3109	0	48A1
Hotel/Motel/Tourist Resort	Tourist Resort Complex	21 Mumdal Drv	Donvale	3111	0	48J3
Boarding House/Hostel/Backpack Hostel	Boarding House/Hostel/Backpack Hostel	669-677 Whitehorse Road	Mitcham	3132	0	49D9
		209-211 Warrandyte Road	Ringwood North	3134	0	49U2

Higher Risk Facilities - Health Care & Special Accommodation

Facility Type	Name	Address	Suburb	Postcode	Estimated Beds	Map Reference
Aged Care	View Bank Gardens Retirement Village	26-46 Rutherford Road	Viewbank	3084	0	20F12
Disability Services	Disability Services	226A Old Etham Rd	Lower Plenty	3093	10	21E10
Aged Care	Chatsworth Terrace	430-432 Main Road	Lower Plenty	3093	0	21F10
Mental Health	Austin Health	C/O 77 Hawdon Street	Heidelberg	3084	0	31K4
Mental Health	Austin Health	C/O 77 Hawdon Street	Heidelberg	3084	0	31K4
Mental Health	Austin Health	C/O 77 Hawdon Street	Heidelberg	3084	0	31K4
Aged Care	Homes & Hostels	C/O 77 Hawdon Street	Heidelberg	3084	0	31K4
Mental Health	Austin Health	Banksia Street	Heidelberg	3084	0	32A5
Aged Care	Catholic Homes For The Elderly	Suite 6 486 Lower Heidelbe	Heidelberg	3084	0	32B4
Aged Care	The Homestead Residential Aged Care		Heidelberg	3084	0	32B4
Aged Care	M W Flynn		Bakwyn North	3104	0	32E12
Aged Care	Leighton Nursing Home	1 Templestowe Road	Bulleen	3105	30	32E5
Disability Services	Disability Services	18 Yamaleen Pl	Bulleen	3105	5	32E8
Disability Services	Disability Services	70 Kawannin St	Bakwyn North	3104	5	32G11
Disability Services	Disability Services	75 Willow Bend	Bulleen	3105	5	32H11
Disability Services	Disability Services	29 Goscome St	Bulleen	3105	5	32H0
Disability Services	Disability Services	32 Hillington Cres	Doncaster	3108	5	32J12
Aged Care	Greenslopes	230 Greenslopes Drive	Templestowe Lower	3107	24	32K4
Aged Care	Templestowe Manor	0 Thompsons Road	Lower Templestowe	3107	0	32K7
Aged Care	Fronitha Aged Care	11 Omar St	Templestowe Lower	3107	0	33B4
Aged Care	Aveo - Templestowe	410-418 Thompsons Road	Lower Templestowe	3107	43	33B5
Aged Care	Emmavale Gardens	7 Elberta Avenue	Lower Templestowe	3107	50	33B9
Day Procedure Centre	Manningham Day Procedure Centre	200 High Street	Lower Templestowe	3107	13	33B9
Aged Care	Doncaster Mealeuca Lodge	362 Manningham Road	Doncaster	3108	51	33C10
Aged Care	Manningham Centre	371 Manningham Road	Doncaster	3108	60	33C10
Aged Care	Blue Cross - Ashby	25 - 31 Ashford Street	Lower Templestowe	3107	60	33C6
Aged Care	Southern Cross Cop - Outer East	16 Herthys Road	Lower Templestowe	3107	52	33D5
Aged Care	Templestowe Pioneers Village	16 Herthys Road	Templestowe	3108	52	33D5
Disability Services	Disability Services	3 Tomi St	Doncaster	3108	5	33E11
Aged Care	Willowbrae - Templestowe Hostel	81-85 Porter Street	Templestowe	3108	45	33F3
Disability Services	Disability Services	6 June Cres	Templestowe	3108	0	33F5
Disability Services	Disability Services	6 June Cres	Templestowe	3108	5	33F5
Aged Care	Blue Cross - Silverwood	101-105 Porter Street	Templestowe	3108	61	33G3
Aged Care	Templestowe Village	29 Fitzsimons Lane	Templestowe	3108	411	33G3
Aged Care	Domaine Village	37 Victoria St	Doncaster	3108	198	33H12
Aged Care	Retirement Unit	31-35 Victoria Street	Doncaster	3108	33	33H12
Aged Care	Emerald Terrace Aged Care	1 Chivers Road	Templestowe	3108	50	33J5
Aged Care	Green Ridge Retirement Home	39 Greenridge Avenue	Templestowe	3108	30	33J8
Aged Care	Huon Health - Templestowe Grange	1-11 Innisfallen Avenue	Templestowe	3108	71	33K3

Higher Risk Facilities - Health Care & Special Accommodation

Manningham

Facility Type	Name	Address	Suburb	Postcode	Estimated Beds	Map Reference
Aged Care	Doncaster Manor	52-54 George Street	Doncaster East	3108	23	34A11
Special Accommodation	Newmans Manor	33 Newmans Rd	Templeslowe	3108	0	34A3
Disability Services	Disability Services	20 May St	Doncaster	3108	8	34B12
Aged Care	Roseville Retirement Village	110 King St	Doncaster East	3108	0	34B9
Disability Services	Disability Services	8 Polaris Dr	Doncaster East	3108	5	34D11
Disability Services	Disability Services	38 Blacool Gort	Doncaster East	3108	5	34D12
Aged Care	Millward	31 Blackburn Road	East Doncaster	3109	60	34D3
Aged Care	Templestowe Orchards Retirement Living	107 Andersons Creek Road	Doncaster East	3109	80	34E7
Aged Care	Donvale Retirement Village	180 Springvale Rd	Donvale	3111	345	34F10
Aged Care	Alexandra Gardens	42 Old Warrandyke Road	Donvale	3111	0	34G12
Aged Care	Perpetua In The Pines Residential Aged Care Servi	300-302 Springvale Road	Donvale	3111	60	34G7
Aged Care	Warrnvale	314 Reynolds Road	Donvale	3111	6	34J7
Aged Care	On Luck Chinese Nursing Home	177-179 Tindalls Road	Donvale	3111	0	35A9
Aged Care	Hilltop Fire Nursing Home		Park Orchards	3114	0	35G8
Aged Care	L'Abri	165 Wonga Road	Ringwood	3134	0	36B11
Aged Care	Allright Manor	31-35 Evester Road	Croydon	3136	0	37B8
Disability Services	Disability Services	13 Paul St	Doncaster	3108	4	46J1
Disability Services	Disability Services	36 Finlayson St	Doncaster	3108	5	47A1
Disability Services	Disability Services	27 Arnott St	Mont Albert North	3129	5	47B5
Disability Services	Disability Services	5 Mitchell Rd	Mont Albert North	3129	5	47B8
Aged Care	Nursing Home	610 Elgar Road	Box Hill North	3129	0	47C5
Disability Services	Disability Services	29 Berry St	Box Hill North	3129	5	47C5
Disability Services	Disability Services	7 Gracefield Dr	Box Hill North	3129	5	47C5
Aged Care	Applewood Retirement Village	5 Grand Blv	Doncaster	3108	549	47D3
Disability Services	Disability Services	6 Wimmera St	Box Hill North	3129	5	47E8
Aged Care	Doncaster Lodge	107 Whittens Lane	Doncaster	3108	5	47F1
Aged Care	Retirement Village	750 Doncaster Road	Doncaster	3108	87	47G1
Disability Services	Disability Services	5 First Ave	Box Hill North	3129	5	47H4
Disability Services	Disability Services	24 Champion St	Doncaster East	3109	5	47K1
Disability Services	Disability Services	13 Ins Ct	Blackburn North	3130	5	47K0
Disability Services	Disability Services	24 Canara St	Doncaster East	3109	5	48A2
Aged Care	Millward	31 Blackburn Road	East Doncaster	3109	90	48B4
Disability Services	Disability Services	14 Ralton Ave	Blackburn North	3130	5	48B5
Aged Care	Retirement Unit	Brendale Avenue	Blackburn North	3130	21	48C0
Private Hospital	Donvale Rehabilitation Hospital	1118-1121 Doncaster Road	Donvale	3111	85	48E1
Aged Care	Retirement Unit	3 Tortoise Avenue	Nunawading	3131	39	48E7
Disability Services	Disability Services	7 Tortoise Ave	Nunawading	3131	6	48E7
Aged Care	Greenview Assisted Living Apartments	33-37 Mitcham Road	Donvale	3111	0	48F2
Aged Care	Pinetree Retirement Village	330 Springvale Rd	Donvale	3111	216	48F3
Aged Care	Brooklea	355 Springvale Road	Donvale	3111	28	48F4
Aged Care	Bupa Donvale	300 - 302 Springvale Rd	Donvale	3111	120	48G2
Aged Care	Pine View Gardens	286 Springvale Rd	Donvale	3111	0	48G2
Special Accommodation	Special Accommodation	12 Maria Avenue	Nunawading	3131	2	48G8
Disability Services	Disability Services	12 Compton St	Mitcham	3132	5	48H0

Manningham							Higher Risk Facilities - Health Care & Special Accommodation						
Facility Type	Name	Address	Suburb	Postcode	Estimated Beds	Map Reference							
Disability Services	Disability Services	45 Lemon Gr	Nunawading	3131	5	48H8							
Aged Care	Retirement Unit	Paige Street	Mitcham	3132	19	48H8							
Disability Services	Disability Services	43 Dunlavin Rd	Mitcham	3132	3	48H8							
Private Hospital	Mitcham Private Hospital	27 Doncaster East Road	Mitcham	3132	01	48K7							
Aged Care	Retirement Unit	2 Watle Valley Road	Mitcham	3132	8	48C8							
Aged Care	Retirement Unit	49 Wamies Road	Mitcham	3132	6	46C9							
Disability Services	Disability Services	7 Tennyson St	Mitcham	3132	5	49C9							
Disability Services	Disability Services	45 Nelson Rd	Ringwood	3134	5	46F7							
Aged Care	Domain Gracedale	205 Warrandyte Road	Ringwood North	3134	75	46J2							
Disability Services	Disability Services	130 Olban Rd	Ringwood	3134	5	49J3							
Disability Services	Disability Services	22 Jull Pole	Ringwood North	3134	4	48K1							

Manningham							Higher Risk Facilities - Education, Community & Public Assembly		
Facility Type	Name	Address	Suburb	Postcodes	Estimated Head Count	Map Reference			
Early Education	Winston Hills Preschool	Rohan Street	View Bank	3084	27	20G12			
Early Education	Mission Australia Learning Services Lower Plenty	412 Main Road	Lower Plenty	3063	120	21F9			
Early Education	Hohnes Road Playhouse	Lot 1 Hohnes Road	Eltham	3085	15	21G10			
Gallery/Museum/Theatres	Gallery/Museum	559 Main Road	Eltham	3085	0	21H10			
Sport Facility	Lower Eltham Cricket Club	Main Rd	Eltham	3085	0	21H10			
Early Education	Eltham South Preschool	Cnr Fordhams Rd & Mearny Rd	Eltham	3095	30	21K9			
Place Of Worship	Anglican Church Of Australia Diocese Of Melbourne	Staggart St	Warrandyte	3113	0	23C12			
Place Of Worship	Warrandyte Community Church	57 Yarra St	Warrandyte	3113	0	23D12			
Early Education	Yarra Warra Preschool	184-186 Research-Warrandyte Road	Warrandyte North	3113	30	23D9			
Reception/Function Centre	Club Warrandyte	120 Yarra St	Warrandyte	3113	0	23E11			
Early Education	Warrandyte Primary School Oshc	Forbes Street	Warrandyte	3113	0	23E12			
Early Education	Warrandyte Neighbourhood House	168-178 Yarra Street	Warrandyte	3113	14	23F11			
Library/Halls/Community Centres	Warrandyte Community Centre	168 Yarra St	Warrandyte	3113	0	23F11			
Library/Halls/Community Centres	Warrandyte Mechanics Institute	Cnr Yarra St & Mitchell Ave	Warrandyte	3113	0	23F11			
Early Education	Warrandyte Child Care & Preschool Centre Co-Op Ltd	2 Masonic Avenue	Warrandyte	3113	38	23H12			
Place Of Worship	St Marks Anglican Church Wonga Park	Yarra Rd	Wonga Park	3115	0	24G11			
Early Education	Burch Family Memorial Preschool	Old Yarra Road	Wonga Park	3115	27	24G12			
Early Education	Wonga Park Community Cottage Child Care Centre	Lot 51 Old Yarra Road	Wonga Park	3115	18	24G12			
Library/Halls/Community Centres	Wonga Park Community Cottage	Old Yarra Rd	Wonga Park	3115	0	24G12			
Early Education	Wonga Park Primary School Oshc	Dudley Road	Wonga Park	3115	0	24H9			
Primary/Secondary School	Wonga Park Primary School	Dudley Road	Wonga Park	3115	353	24H9			
Early Education	East Ivanhoe Primary School Holiday Program	Warmoliff Road	Ivanhoe East	3079	0	31J9			
Early Education	Ivanhoe East Primary School Oshc	35 Warmcliffe Road	Ivanhoe East	3079	0	31J9			
Place Of Worship	Catholic Archdiocese Of Melbourne	63 Wilfred St	Ivanhoe East	3079	0	31J9			
Primary/Secondary School	Ivanhoe East Primary School	Warmcliffe Road	Ivanhoe East	3079	572	31J9			
Primary/Secondary School	Mother Of God School	66 Wilfred Road	Ivanhoe East	3079	181	31J9			
Early Education	Heidelberg Preschool	Orient Place	Heidelberg	3084	25	31K4			
Place Of Worship	Uniting Church In Australia The	Burgundy St	Heidelberg	3084	0	31K4			
Early Education	Mercy/Austin Vacation Care	Yarra Street	Heidelberg	3084	0	31K5			
Early Education	East Ivanhoe Preschool	1 King Street	Ivanhoe East	3079	25	31K9			
Place Of Worship	Uniting Church In Australia The	Cnr Lower Heidelberg Rd & King St	Ivanhoe East	3079	0	31K8			
Place Of Worship	Anglican Church Of Australia Diocese Of Melbourne	46 Warmcliffe Rd	Ivanhoe	3079	0	31K9			
Early Education	Heidelberg Primary School Oshc	118 Cape Street	Heidelberg	3084	0	32A4			
Primary/Secondary School	Heidelberg Primary School	Cape Street	Heidelberg	3084	342	32A4			
Early Education	St John'S Primary School Oshc	55 Cape Street	Heidelberg	3084	0	32A5			
Place Of Worship	Catholic Archdiocese Of Melbourne	52 Yarra St	Heidelberg	3084	0	32A5			
Primary/Secondary School	Our Lady Of Mercy College	52 Cape Street	Heidelberg	3084	1118.4	32A5			
Primary/Secondary School	St John'S School	55 Cape Street	Heidelberg	3084	302	32A5			
Early Education	Abc Developmental Learning Centre-Heidelberg	28 Rosanna Road	Heidelberg	3084	122	32B4			
Other Colleges	Kal Multimedia Training Pty Ltd	Suite 0 486 Lower Heidelberg Rd	Heidelberg	3084	0	32B4			

Manningham		Higher Risk Facilities - Education, Community & Public Assembly				
Facility Type	Name	Address	Suburb	Postcode	Estimated Head Count	Map Reference
Place Of Worship	Anglican Church Of Australia Diocese Of Melbourne	1 Burgundy St	Heidelberg	3084	0	32E4
Sport Facility	Golf Course/Driving Range	46 Columbia Street	Balwyn North	3104	0	32C12
Libraries/Halls/Community Centres	Heidelberg West Sporting Club	120 Beverly Rd	Heidelberg	3084	0	32C3
Early Education	A.B.C. Developmental Learning Centre - Rosanna	99-97 Banyule Road	Rosanna	3084	90	32D1
Primary/Secondary School	Banyule Primary School	Banyule Road	Rosanna	3084	220.6	32D1
Early Education	Boroondara Tennis Centre	150 Bulleen Road	Balwyn North	3104	14	32D10
Sport Facility	Boroondara Tennis Centre	150 Bulleen Road	Balwyn North	3104	0	32D10
Sport Facility	Swimming Pool	166 Bulleen Road	Bulleen	3105	0	32D10
Early Education	Baile Vue Oshc	20 Highview Road	Balwyn North	3104	0	32D11
Primary/Secondary School	Bella Vue Primary School	20 Highview Road	Balwyn North	3104	215.2	32D11
Place Of Worship	Christian Outreach Centre	14 Scarborough Drv	Rosanna	3084	0	32E1
Primary/Secondary School	Marcellin College	160 Bulleen Road	Bulleen	3105	1228	32E10
Reception/Function Centre	Manningham Convention Centre The	1 Thompsons Rd	Bulleen	3105	0	32E10
Early Education	Creative Play Early Learning Centre	1 Templestowe Road	Bulleen	3105	120	32E5
Reception/Function Centre	Bulleen Food Room	192C Bulleen Rd	Bulleen	3105	0	32E6
Early Education	St Bernadette'S Primary School Oshc	53 Stanley Street	Ivanhoe	3079	0	32E9
Primary/Secondary School	St Bernadette'S School	53 Stanley Street	Ivanhoe West	3079	178	32E9
Early Education	Kaikor Monessori Centre	1-3 Estelle Street	Bulleen	3105	90	32F10
Sport Facility	Golf Course/Driving Range	37-59 Templestowe Road	Bulleen	3105	0	32F4
Early Education	Bulleen Preschool	5 Demerck Avenue	Bulleen	3105	30	32F7
Early Education	Bulleen Rhythm And Rhyme Early Learning Centre	60 Manningham Road	Bulleen	3105	40	32F7
Early Education	St Clement Of Rome Oshc - Camp Australia	9 Egan Drive	Bulleen	3105	0	32F7
Place Of Worship	Catholic Archdiocese Of Melbourne	Egan Drv	Bulleen	3105	0	32F7
Primary/Secondary School	St Clement Of Rome School	9 Egan Drive	Bulleen	3105	347.6	32F7
Early Education	Yarraleen Preschool	92 Rooklea Road	Bulleen	3105	28	32F8
Early Education	Wonderworld Childcare & Kindergarten	104-108 Templestowe Road	Bulleen	3105	60	32G4
Early Education	Bulleen Templestowe Basketball Club Inc Creche	Sheahans Road	Bulleen	3105	112	32G5
Sport Stadium	Indoor Sports Complex	27-37 Sheahans Road	Bulleen	3105	0	32G5
Primary/Secondary School	Bulleen Heights School	Pleasant Road	Bulleen	3105	330.4	32G9
Libraries/Halls/Community Centres	Bulleen Library	Bulleen Plaza Shopping Cntr	Bulleen	3105	0	32G7
Early Education	Moresby Avenue Child Care Centre	6 Moresby Avenue	Bulleen	3105	35	32G9
Early Education	Lower Templestowe Preschool	107 Swanston Street	Lower Templestowe	3107	30	32H6
Other Colleges	Edar	9 Lillian Street	Bulleen	3105	0	32H8
Place Of Worship	Anglican Church Of Australia Diocese Of Melbourne	30 Lillian St	Bulleen	3105	0	32H9
Early Education	Vista Valley Kindergarten	3 Vista Street	Bulleen	3105	29	32J10
Sport Facility	Bowling Club	7 Gregory Court	Doncaster	3108	0	32J12
Other Colleges	Knowledgespace Pty Ltd	4 Marcus Rd	Lower Templestowe	3107	0	32J8
Primary/Secondary School	Bulleen Heights School	221 Manningham Road	Lower Templestowe	3107	0	32J9
Sport Facility	Golf Course/Driving Range	50 Cleveland Avenue	Lower Plenty	3083	0	32K1
Early Education	Total Care For Kids	271 Thompsons Road	Lower Templestowe	3107	45	32K7
Libraries/Halls/Community Centres	Bulleen & Templestowe Community House	284 Thompsons Rd	Lower Templestowe	3107	0	32K7
Place Of Worship	Baptist Union Of Victoria	41 Marcus Rd	Templestowe Lower	3107	0	32K7
Early Education	Dinky'S Early Learning Centre	97 High Street	Doncaster	3108	19	33A11
Early Education	Templestowe Valley Preschool	3 Birchwood Avenue	Lower Templestowe	3107	50	33A5

Manningham Higher Risk Facilities - Education, Community & Public Assembly

Facility Type	Name	Address	Suburb	Postcode	Estimated Head Count	Map Reference
Early Education	Templestowe Valley Primary School	15 Birchwood Avenue	Lower Templestowe	3107	0	33A5
Primary/Secondary School	Templestowe Valley Primary School	15 Birchwood Avenue	Lower Templestowe	3107	487.2	33A5
Early Education	Stride Early Intervention Centre	44 Balmoral Avenue	Lower Templestowe	3107	25	33A8
Early Education	Doncaster Park Kindergarten	18 Studley Street	Doncaster	3108	30	33B11
Early Education	Twin Hills Preschool	39 Mayfair Avenue	Lower Templestowe	3107	29	33B7
Early Education	Templestowe World Of Learning	247-249 High Street	Lower Templestowe	3107	60	33B8
Primary/Secondary School	St Kevin'S School	26-44 Herlithys Road	Templestowe Lower	3107	153	33C8
Early Education	Templestowe Heights Oshc - Camp Australia	High Street	Lower Templestowe	3107	0	33C7
Place Of Worship	Anglican Church Of Australia Diocese Of Melbourne	8 Dellfield Drv	Templestowe Lower	3107	0	33C7
Primary/Secondary School	Templestowe Heights Primary School	High Street	Templestowe Lower	3107	245.4	33C7
Other Colleges	Kjb Occupational Health Services	39 Scarlet Ash Dve	Lower Templestowe	3107	0	33C9
Early Education	St Gregory The Great Oshc - Camp Australia	360 Manningham Road	Doncaster	3108	0	33D11
Place Of Worship	Catholic Archdiocese Of Melbourne	71 Williamsons Rd	Doncaster	3108	0	33D11
Primary/Secondary School	St Gregory The Great School	360 Manningham Road	Doncaster	3108	432	33D11
Libraries/Halls/Community Centras	Doncaster Library	Doncaster Shoppingtown	Doncaster	3108	0	33D12
Early Education	Cuddy Bear Child Care	8 Swilk Street	Templestowe	3108	65	33D4
Early Education	Templestowe Preschool	3 Swilk Street	Templestowe	3108	29	33D4
Reception/Function Centre	Westerfolds Sport Centre	2-8 Swilk St	Templestowe	3108	0	33D4
Sport Facility	Bowling Club	1 Swilk Street	Templestowe	3108	0	33D4
Sport Facility	Swimming Pool	2-8 Swilk Street	Templestowe	3108	0	33D4
Early Education	St Kevins Lower Templestowe Oshc - Extend	Herlithys Road	Lower Templestowe	3107	0	33D6
Place Of Worship	St Kevin'S	Herlithys Rd	Templestowe	3108	0	33D8
Primary/Secondary School	Templestowe College	Cypress Avenue	Templestowe Lower	3107	448.7	33D7
Early Education	Templestowe Heights Preschool	64 Fyfe Drive	Lower Templestowe	3107	30	33D8
Early Education	Aquarena Child Care	136-153 Williamsons Road	Doncaster	3108	29	33D9
Sport Stadium	Aquarena Ymca	136-153 Williamsons Rd	Doncaster	3107	0	33D9
Place Of Worship	Uniting Church In Australia The	Westfield Drv	Templestowe Lower	3108	0	33E11
Early Education	Doncaster Oshc - Camp Australia	2-12 Council Street	Doncaster	3108	0	33E12
Primary/Secondary School	Doncaster Primary School	2-12 Council Street	Doncaster	3108	450	33E12
Place Of Worship	Uniting Church In Australia The	104 Atkinson St	Templestowe	3108	0	33E4
Early Education	Doncaster Early Learning Child Care	20 Turana Street	Doncaster	3108	45	33F11
Early Education	Varra Valley Preschool	34 Hakes Street	Templestowe	3108	28	33F4
Other Colleges	Doncaster Secondary College	123 Church Road	Doncaster	3108	0	33G12
Place Of Worship	Australian Christian Churches Victoria	123 Church Rd	Doncaster	3108	0	33G12
Primary/Secondary School	Doncaster Secondary College	123 Church Road	Doncaster	3108	142.4	33G12
Other Colleges	Integrated Training Solutions (Aust) Pty Ltd	8 Beale Crt	Templestowe	3108	0	33G4
Early Education	Doncaster Gardens Preschool	53 Victoria Street	Doncaster East	3109	20	33H12
Early Education	Early Learning Centre Templestowe	1 Niland Rise	Templestowe	3108	60	33H4
Early Education	Templestowe Park Oshc - Camp Australia	300 Church Road	Templestowe	3108	0	33H4
Primary/Secondary School	Templestowe Park Primary School	360 Church Road	Templestowe	3108	516	33H4
Early Education	Noni'S Nursery	1 Hillcroft Drive	Templestowe	3108	26	33H8
Early Education	Activities Centre	125 George Street	Doncaster East	3109	0	33U11
Early Education	Doncaster Gardens Primary School Oshc	Sandhurst Avenue	Doncaster East	3109	0	33U11
Early Education	Try Doncaster Activities Centre	George Street	Doncaster	3108	15	33U11

Manningham							Higher Risk Facilities - Education, Community & Public Assembly			
Facility Type	Name	Address	Suburb	Postcode	Estimated Head Count	Map Reference				
Place Of Worship	Lutheran Church Of Australia	51 Victoria St	Doncaster	3108	0	33J11				
Primary/Secondary School	Doncaster Gardens Primary School	Sandhurst Avenue	Doncaster East	3109	558	33J11				
Place Of Worship	Greek Orthodox Archdiocese Of Australia	160 Porter St	Templestowe	3108	0	33L4				
Early Education	Mykidz Early Learning Centre	81 George Street	Doncaster East	3109	30	34A11				
Place Of Worship	United Muslim Migrant Association	72 George St	Doncaster	3108	0	34A11				
Early Education	Pied Piper Childcare	14 Aloha Gardens	Templestowe	3108	60	34A9				
Place Of Worship	Holy Cross Passionist Monastery	222 Serpellis Road	Templestowe	3108	0	34A7				
Primary/Secondary School	St Charles Borromeo School	Tuckers Road	Templestowe	3108	173	34A7				
Early Education	Serpell	Tuckers Road	Templestowe	3108	0	34A8				
Early Education	Serpell Oshc - Camp Australia	Tuckers Road	Templestowe	3108	0	34A8				
Primary/Secondary School	Serpell Primary School	Tuckers Road	Templestowe	3108	941	34A8				
Place Of Worship	Salvation Army	37 Taunton St	Doncaster	3108	0	34B10				
Primary/Secondary School	East Doncaster Secondary College	20 George St	Doncaster East	3109	1589	34B11				
Sport Stadium	Indoor Sports Complex	350 Blackburn Road	Doncaster East	3109	0	34C10				
Other Colleges	Interactive Training Group	Suite 4 201 Blackburn Road	Doncaster	3108	0	34C11				
Place Of Worship	Edge Church	Cnr Blackburn & Woodhouse Rds	Doncaster East	3109	0	34C12				
Other Colleges	Activate Australia	10 Renoir Avenue	Templestowe	3108	0	34C8				
Reception/Function Centre	Calo Club	4 Annan Pl	Templestowe	3108	0	34C8				
Early Education	Deep Creek Child Care Centre	510 Blackburn Road	Doncaster East	3109	35	34D5				
Early Education	Deep Creek Preschool	510 Blackburn Road	Doncaster East	3109	30	34D5				
Early Education	Pines Learning	1/520 Blackburn Road	Doncaster East	3109	30	34D5				
Library/Halls/Community Centres	Pines Learning	1/ 520 Blackburn Rd	Doncaster East	3109	0	34D5				
Library/Halls/Community Centres	The Pines Library	The Pines Shopping Centre	Doncaster East	3109	0	34D6				
Place Of Worship	Anglican Church Of Australia Diocese Of Melbourne	460 Blackburn Rd	Doncaster East	3109	0	34D7				
Early Education	Catjumo Preschool	88 Polaris Drive	Doncaster East	3109	25	34E11				
Early Education	Koala Childcare And Early Learning Centre - Doncas	100 Anderson Creek Road	Doncaster East	3109	62	34E8				
Place Of Worship	Uniting Church In Australia The	152 Anderson Creek Rd	Doncaster East	3109	0	34E8				
Early Education	A.B.C. Developmental Learning Centre - Doncaster Ea	76 Andersons Creek Road	Doncaster East	3109	74	34E8				
Early Education	Time-Out Child Care - Doncaster East	100 Deep Creek Drive	Doncaster East	3109	60	34F3				
Early Education	Milgate Oshc - Camp Australia	Landscap Drive	Doncaster East	3109	0	34F9				
Early Education	Our Lady Of The Pines Oshc - Camp Australia	77 Carbine Street	Donvale	3111	0	34F9				
Place Of Worship	Catholic Archdiocese Of Melbourne	77 Carbine St	Donvale	3111	0	34F9				
Primary/Secondary School	Milgate Primary School	Landscap Drive	Doncaster East	3109	660.4	34F9				
Primary/Secondary School	Our Lady Of The Pines School	77 Carbine Street	Donvale	3111	447	34F9				
Early Education	Gumnut Gully Preschool	Lairnoo Drive	Doncaster East	3109	27	34G8				
Sport Facility	Bowling Club	11 Springvale Road	Donvale	3111	0	34G7				
Primary/Secondary School	Warrandyte High School	Cnr Alexander & Warrandyte Rds	Warrandyte	3113	707.9	34H2				
Other Colleges	Lifedid Pty Ltd	14 Beaufort Rise	Warrandyte	3113	0	34H3				
Sport Facility	Pony Club	7 Springvale Road	Donvale	3111	0	34H7				
Early Education	Carey Donvale Oshc	9 Era Court	Donvale	3111	0	34H9				
Early Education	Carey Grammar Preschool	9 Era Court	Donvale	3111	34	34H9				
Primary/Secondary School	Carey Baptist Grammar School	9 Era Ct	Donvale	3111	233	34H9				
Place Of Worship	Australian Christian Churches Victoria	320 Reynolds Rd	Donvale	3111	0	34J7				
Early Education	Donvale Christian College Oshc	155 Tindals Road	Donvale	3111	0	34K9				

Manningham Higher Risk Facilities - Education, Community & Public Assembly

Facility Type	Name	Address	Suburb	Postcode	Estimated Hoard Count	Map Reference
Primary/Secondary School	Donvale Christian College	156 Tindals Road	Donvale	3111	660	34K9
Early Education	Warrandyte & District Preschool	2 Tarona Avenue	Warrandyte	3113	29	35C1
Place Of Worship	Uniting Church In Australia The	Cnr Tarona Ave & Westend Rd	Warrandyte	3113	0	35C1
Early Education	Anderson'S Creek Primary School Oshc	Drysdale Road	Warrandyte	3113	0	35C2
Libraries/Halls/Community Centres	Warrandyte Library	Melbourne Hill Road	Warrandyte	3113	0	35C2
Primary/Secondary School	Andersons Creek Primary School	Drysdale Road	Warrandyte	3113	349	35C2
Early Education	Park Orchards Kindergarten	570-572 Park Road	Park Orchards	3114	30	35D10
Early Education	Park Orchards Learning Centre	570-572 Park Road	Park Orchards	3114	25	35D10
Libraries/Halls/Community Centres	Park Orchards Community House	572 Park Rd	Park Orchards	3114	0	35D10
Early Education	Park Orchards Primary School Oshc	Bowmore Avenue	Park Orchards	3114	0	35D11
Primary/Secondary School	Warrandyte Primary School	Forbes Street	Warrandyte	3113	300.2	35E1
Place Of Worship	Anglican Church Of Australia Diocese Of Melbourne	29 Hopetoun St	Park Orchards	3114	0	35E11
Primary/Secondary School	Park Orchards Primary School	1-3 Bowmore Avenue	Park Orchards	3114	370	35E11
Place Of Worship	Catholic Archdiocese Of Melbourne	54 Knees Rd	Park Orchards	3114	0	35E9
Primary/Secondary School	St Anne'S School	60 Knees Road	Park Orchards	3114	307	35E9
Reception/Function Centre	Putters	321 Jumping Creek Rd	Warrandyte	3113	0	35J1
Place Of Worship	Youth Dimension	28- 64 Hall Rd	Warrandyte South	3134	0	35J8
Other Colleges	Melbourne Rudolf Steiner Seminar Ltd	37A Wellington Park Drive	Warranwood	3134	0	36A10
Primary/Secondary School	Parkwood Secondary College	Tortoise Drive	Ringwood North	3134	414.9	36A12
Place Of Worship	Australian Christian Churches Victoria	340 Wonga Rd	Warranwood	3134	0	36A7
Early Education	Melbourne Rudolf Steiner Kindergarten	213 Wonga Road	Warranwood	3134	55	36B10
Primary/Secondary School	Melbourne Rudolf Steiner School	213 Wonga Road	Warranwood	3134	498.2	36B10
Early Education	Warranwood Oshc	1 Wellington Drive	Warranwood	3134	0	36B9
Primary/Secondary School	Warranwood Primary School	1 Wellington Park Drive	Warranwood	3134	568	36B9
Early Education	Kurboon Kindergarten	75 Bamboka Road	Warranwood	3134	27	36D6
Place Of Worship	Sai Baba Book & Information	24 Kenilworth Ave	Wonga Park	3115	0	36G3
Place Of Worship	The Christian Reform Church Of Wonga Park	251- 253 Yarra Rd	Wonga Park	3115	0	36G8
Early Education	Yarra Road Oshc - Camp Australia	222-228 Yarra Road	Croydon North	3136	0	36G7
Primary/Secondary School	Yarra Road Primary School	222 - 228 Yarra Road	Croydon	3136	397	36G7
Early Education	Yamunga Community Centre	76 - 86 Croydon Hills Drive	Croydon Hills	3136	21	36G9
Libraries/Halls/Community Centres	Yamunga Community Centre	Croydon Hills Drv	Croydon Hills	3136	0	36G9
Early Education	Bright Horizons Australia Childcare Croydon North	156-158 Yarra Road	Croydon Hills	3136	76	36H8
Early Education	Bumble Bee Schoolhouse	10 Karriagal Street	Croydon North	3138	110	37B8
Early Education	Croydon North Kindergarten	90 Bonnie View Road	Croydon North	3138	24	37B9
Early Education	The Village School Oshc - Extend	9-13 Holloway Road	Croydon North	3136	0	37C6
Primary/Secondary School	Village School	9-13 Holloway Road	Croydon North	3138	58	37C6
Place Of Worship	Church Of Jesus Christ Of Latter-Day Saints	1216 Old Burke Rd	Balwyn North	3104	0	45K1
Early Education	Bellevue Kindergarten	49 Bullen Road	Balwyn North	3104	28	46C1
Libraries/Halls/Community Centres	Hall/Auditorium	380 Balwyn Road	Balwyn North	3104	0	48E1
Reception/Function Centre	Balwyn Larder	392 Balwyn Rd	Balwyn North	3104	0	48E1
Early Education	Boroondara Park Oshc	Almond Street	Balwyn North	3104	0	48F1
Primary/Secondary School	Boroondara Park Primary School	Almond Street	Balwyn North	3104	644.2	48F1
Early Education	Greythorn Early Childhood Centre	4 Trentwood Avenue	Balwyn North	3104	40	46H1
Early Education	St Bridget'S Oshc	36 Swayn Street	Greythorn	3104	0	46J3

Manningham Higher Risk Facilities - Education, Community & Public Assembly

Facility Type	Name	Address	Suburb	Postcode	Estimated Head Count	Map Reference
Primary/Secondary School	St. Bridget's School	36 Sweyn Street	Balwyn North	3104	147	46J3
Place Of Worship	Uniting Church In Australia The	Cnr Balmore & Winfield Rds	Balwyn North	3104	0	46J5
Early Education	Wonderland Childcare & Kinder	8 High Street	Doncaster	3108	60	48K1
Other Colleges	Safety Wise Solutions Pty Ltd	Unit 14 413 Doncaster Road	Doncaster	3108	0	48K1
Place Of Worship	Synagogue Yeshurun	8 High St	Doncaster	3108	0	48K1
Other Colleges	The Victorian Centre For Training And Development	Unit 1 2 Andrew Court	North Balwyn	3104	0	48K2
Early Education	Friend Street Kindergarten	5 Friend Street	Mont Albert North	3129	30	48K4
Other Facility	Club/Clubroom	479 Balmore Road	Mont Albert North	3129	0	47A4
Sport Facility	Golf Course/Driving Range	463-535 Doncaster Road	Doncaster	3108	0	47B1
Early Education	Birralee Primary Oshc	Heyington Avenue	Doncaster	3108	0	47B2
Primary/Secondary School	Birralee Primary School	Heyington Avenue	Doncaster	3108	153	47B2
Primary/Secondary School	Koonung Secondary College	615 Elgar Road	Mont Albert North	3129	1130.6	47B5
Place Of Worship	Evangelical Chinese Church	842-844 Elgar Rd	Box Hill	3128	0	47C4
Early Education	Elgar Court Occasional Care Centre	1 Elgar Court	Doncaster	3108	35	47D1
Reception/Function Centre	Pinnacle Valley Resort	Suite 3/ 600 Doncaster Rd	Doncaster	3108	0	47D1
Early Education	Box Hill North Oshc	Elizabeth Street	Box Hill North	3129	0	47D4
Early Education	Box Hill North Primary Kindergarten	Elizabeth Street	Box Hill North	3129	25	47D4
Primary/Secondary School	Box Hill North Primary School	Elizabeth Street	Box Hill North	3129	321	47D4
Sport Facility	Tennis Club	24 Elizabeth Street	Box Hill North	3129	0	47D4
Other Colleges	Gryphon Learning Pty Ltd	First Floor, 851 Doncaster Road	Doncaster	3108	0	47E1
Place Of Worship	Churches Of Christ Conference In Victoria & Tasman	680 Doncaster Rd	Doncaster	3108	0	47E1
Other Colleges	National Training Centre Of Australia Pty Ltd	20 Shanklin St	North Box Hill	3129	0	47E4
Early Education	Woodhouse Grove Kindergarten	112 Woodhouse Grove	Box Hill North	3129	29	47E5
Libraries/Halls/Community Centres	Kemmur Neighbourhood House	57 Linda Ave	Box Hill North	3129	0	47E8
Early Education	Doncaster Kindergarten	Hummel Way	Doncaster	3108	29	47F1
Place Of Worship	Liberty Christian Church	720 Doncaster Rd	Doncaster	3108	0	47F1
Sport Facility	Rf	669 Doncaster Road	Doncaster	3108	0	47F1
Place Of Worship	Oac Ministries (Aust) Ltd	U2/ 6-11 Highview Drv	Doncaster	3108	0	47F2
Early Education	Kemmur After School Hours Program	178 Dorking Road	Box Hill North	3129	0	47F5
Place Of Worship	Catholic Archdiocese Of Melbourne	138 Woodhouse Gr	Box Hill North	3129	0	47F5
Primary/Secondary School	Berengarra School	43 Harrison Street	Box Hill North	3129	35	47F5
Primary/Secondary School	Kemmur Primary School	Mobray Street	Box Hill North	3129	292.4	47F5
Early Education	Box Hill Early Learning Child Care Centre & Kinder	152 Dorking Road	Box Hill North	3129	50	47F8
Place Of Worship	Angloan Church Of Australia Diocese Of Melbourne	106 Church Rd	Doncaster	3108	0	47G1
Sport Facility	Tennis Club	11 Benjamin Street	Box Hill North	3129	0	47G4
Reception/Function Centre	Monte Carlo Receptions	5 Mitchell St	Doncaster East	3109	0	47J1
Sport Stadium	Indoor Sports Complex	3 Mitchell Street	Doncaster East	3109	0	47J1
Early Education	Katrina Preschool	69 Katrina Street	Blackburn North	3130	27	47J6
Other Colleges	Rockwell Automation Australia Ltd	37 Chapman St	Blackburn	3130	0	47J5
Early Education	Minkins Kindergarten Childcare Centre	13 Leads Street	Doncaster East	3109	48	47K1
Early Education	Sis Peter & Paul's Oshc	16 Beverley Street	Doncaster East	3109	0	47K1
Primary/Secondary School	Ss Peter & Paul's School	10 Beverley Street	Doncaster East	3109	203	47K1
Sport Stadium	Indoor Sports Complex	12 Leads Street	Doncaster East	3109	0	47K1
Place Of Worship	Catholic Archdiocese Of Melbourne	23 Leads St	Doncaster East	3109	0	47K2

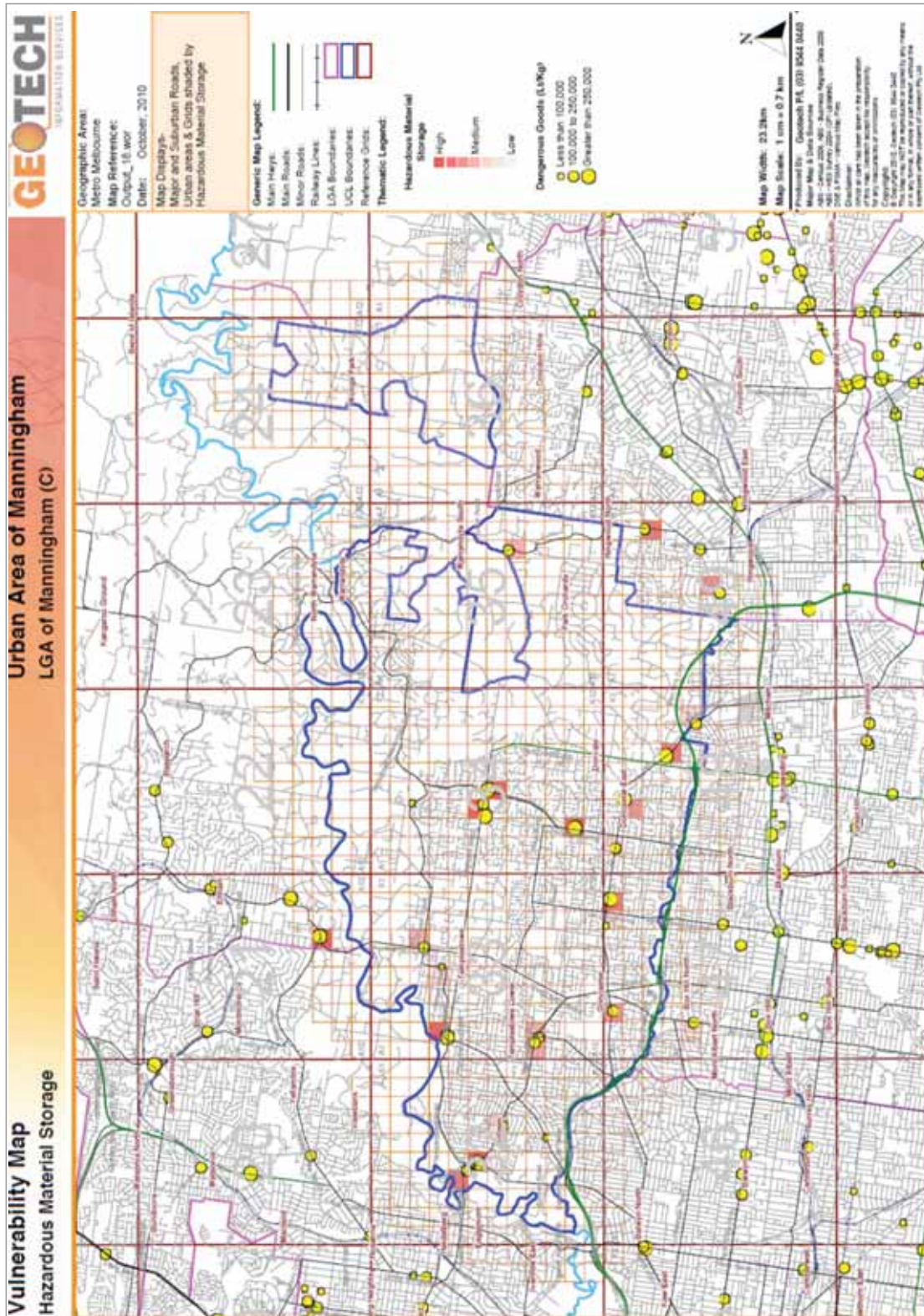
Manningham							Higher Risk Facilities - Education, Community & Public Assembly						
Facility Type	Name	Address	Suburb	Postcode	Estimated Head Count	Map Reference							
Early Education	Ace Child Care Centre	2 Renshaw Street	Doncaster East	3109	34	47K3							
Early Education	Old Orchard Primary School Combined Osho	70-88 Koonung Road	Blackburn North	3130	0	47K6							
Primary/Secondary School	Old Orchard Primary School	88 Koonung Road	Blackburn North	3130	533	47K6							
Place Of Worship	Uniting Church In Australia The	105 Koonung Rd	Blackburn North	3130	0	47K7							
Early Education	Gloryland Childcare & Kindergarten	952-954 Doncaster Rd	Doncaster East	3109	70	48A1							
Early Education	Beverley Hills Kindergarten	2 Damala Street	Doncaster East	3109	30	48A3							
Other Colleges	Natural Skinicare College	30 Thea Grove	Doncaster East	3109	0	48A4							
Early Education	Ivy Ferguson Kindergarten	4 Montgomery Street	Doncaster East	3109	29	48B1							
Other Colleges	Doncare	8 Montgomery Street	Doncaster East	3109	0	48B1							
Place Of Worship	Reach Community Church	Devon Plaza	Box Hill	3128	0	48B1							
Early Education	Brookkids Combined Osho	Cassowary Street	Doncaster East	3109	0	48B3							
Early Education	Doncaster East Daycare & Kindergarten	84 Blackburn Road	Doncaster East	3109	42	48B3							
Other Colleges	Vision Fix Software & Support Pty Ltd	19 Rosella St	Doncaster East	3109	0	48B3							
Place Of Worship	Coptic Orthodox Church	3 Cassowary St	Doncaster East	3109	0	48B3							
Primary/Secondary School	Beverley Hills Primary School	Cassowary Street	Doncaster East	3109	166	48B3							
Sport Stadium	Slater Reserve Stadium Association	Grosvenor St	Blackburn North	3130	0	48B5							
Early Education	Abc Developmental Learning Centre - Blackburn	118 Surrey Road	Blackburn	3130	57	48B7							
Early Education	Donburn Osho - Camp Australia	Colchester Drive	Doncaster East	3109	0	48C1							
Early Education	Doncaster East Preschool Centre	Cnr Blackburn Rd & Doncaster Rd	Doncaster East	3109	28	48C1							
Place Of Worship	Uniting Church In Australia The	Cnr Doncaster & Blackburn Rds	Doncaster East	3109	0	48C1							
Primary/Secondary School	Donburn Primary School	Colchester Drive	Doncaster East	3109	329	48C1							
Early Education	St Philips Primary School	60 Junction Road	Blackburn North	3130	0	48C6							
Place Of Worship	Catholic Archdiocese Of Melbourne	60 Junction Rd	Blackburn North	3130	0	48C6							
Primary/Secondary School	St Philip'S School	60 Junction Road	Blackburn North	3130	158.2	48C6							
Early Education	Tunstall Square Kindergarten	Maggs Street	Doncaster East	3109	29	49D3							
Place Of Worship	Suburban Community Vineyard Church	9 Winifred St	Nunawading	3131	0	48D6							
Sport Facility	Nunawading Tennis Club Inc	Lane St	Nunawading	3131	0	48D7							
Place Of Worship	Anglican Church Of Australia Diocese Of Melbourne	1111 Doncaster Rd	Doncaster East	3109	0	48E1							
Early Education	A.B.C Developmental Learning Centres - Donvale	11 Mitcham Road	Donvale	3111	103	48E2							
Early Education	Donvale Osho	Elata Street	Donvale	3111	0	48E4							
Primary/Secondary School	Donvale Primary School	Elata Street	Donvale	3111	0	48E4							
Early Education	Warekilla Preschool	Cnr Kett St & Busiana Way	Donvale	3111	332	48E4							
Early Education	Montessori Early Education Centre	36A Mitcham Road	Nunawading	3131	33	48E8							
Early Education	Montessori Early Education Centre	36A Mitcham Road	Donvale	3111	12	48F3							
Other Colleges	Heatherwood School	36A Mitcham Road	Donvale	3111	80	48F3							
Primary/Secondary School	Heatherwood School	370 Springvale St	Donvale	3111	0	48F4							
Sport Facility	Tennis Club	360 Springvale Road	Donvale	3111	0	48F4							
Early Education	Little Raskals Kindergarten & Child Care Centre	25 Springvale Road	Nunawading	3131	0	48F6							
Place Of Worship	All Saints Anglican Church	94 Springvale Road	Nunawading	3131	40	48F8							
Other Colleges	Pines Learning	87 Springvale Rd	Nunawading	3131	0	48F8							
Other Colleges	Bustell C.P.D. Learning Centre	283 Springvale Rd	Donvale	3111	0	48G1							
Place Of Worship	Presbyterian Church Of Victoria	7 Tadstan Place	Donvale	3111	0	48G2							
Early Education	Donvale Preschool	5 Mc Gowans Rd	Donvale	3111	0	48G3							
Early Education	Childrens Corner Learning Centre	7 Florence Avenue	Donvale	3111	28	48G4							
Early Education		2 Hedge End Road	Nunawading	3131	38	48H5							

APPENDIX A

Appendix A.3 – Hazardous Materials Risk Management Register

A Hazardous Materials Risk Management Register will be included in a future iteration of this plan with the development of the UFRP tool.

Vulnerability Map – Hazardous Material Storage MANNINGHAM



APPENDIX B

Multi-Agency Action Plan

The Manningham MFMP is currently preparing a Multi-Agency Action Plan to address the fire management objectives of this plan. Existing treatment works have been carried over from the MFPP as an interim measure.

Actions are to be devised to work towards preparing for, preventing, responding to and recovering from unplanned fires. Each action, where possible is required to be specific, measurable, achievable, relevant and time-framed. The action plan outlines each action stating;

- Who is responsible for carrying out and reporting on the action;
- When the action is going to happen; and
- Provides a measure that can be used to determine that the action is complete or partially completed.

Reporting on Action Plan progress will involve checking and recording action outcomes against the pre-stated measures.

The Action Plan will include treatments that are municipal wide as well as specific to address assets listed in the VFRR. Municipal wide treatments are activities which reduce the overall bushfire risk within the MFMP area. They are applied across the area irrespective of asset and/or location. The relevant actions are applied across all tenures with each agency responsible for the lands under their care. These treatments are undertaken on an ongoing basis as part of normal business and are not linked to specific assets in the VFRR. Rather they are applied across all or part of Manningham as designated by legislation or agency policy (e.g. Fire Danger Periods, Total Fire Ban's). In addition, assets listed under specific environments at risk including Human Settlement, Natural Environment, Economic, Infrastructure, and Social listed in the VFRR will also have actions devised by the MFMP to treat these risks.

Structure and hazardous materials fire risk will be addressed in future iterations of this MFMP and Action Plan once the Urban Fire Risk Profiling (UFRP) tool is developed and ready for use.

APPENDIX C

Appendix C.1 – Hazardous Trees

Found through the Manningham City Council website.

Appendix C.2 – Community Information Guides (formerly Township Protection Plans)

<http://cfaonline.cfa.vic.gov.au/mycfa/Show?pageld=publicTownshipProtectionPlans#PR>

Appendix C.3 – Neighbourhood Safer Places (NSP)

Manningham Municipal Area's NSP are as follows:

Warrandyte Senior Citizens Centre 2-28 Taroona Ave, Warrandyte

Domeney Reserve Sporting Pavilion 24-52 Knees Road, Park Orchards

Wonga Park Primary School Cnr Dudley Rd and Lantana Dr, Wonga Park

Warrandyte Reserve Pavilion, 2-28 Taroona Ave, Warrandyte has been decommissioned for the 2012-13 FDP due to renovations.

For more information on NSP visit, www.cfa.vic.gov.au

Appendix C.4 – Community Fire Refuges

Manningham City Council does not have any identified Fire Refuges

APPENDIX D

Appendix D.1 – Community engagement work plan

Appendix D.2 – Stakeholder Matrix

Influence categories: H= High: Key stakeholders who have direct interest and investment in the project

M= Moderate: stakeholders who have a general interest in the project L= Low: parties who may be interested in the project (but not stakeholder)

Stakeholder Matrix			
STAKEHOLDER	Interest in Municipal Fire Management Plan	Influence (H, M, L)	Engagement Approach
Country Fire Authority	Key contributor	H	Member of the MFMP and sub committee Participate in bimonthly meetings
Metropolitan Fire Brigade	Key contributor	H	Member of the MFMP and subcommittee Participate in bimonthly meetings
Department of Sustainability and Environment	Key contributor	H	Member of the MFMP and subcommittee Participate in bimonthly meetings
Manningham City Council	Key contributor, responsible for the preparation of the plan	H	Member of the MFMP and subcommittee Arrange in bimonthly meetings
VicRoads	Strategic asset management for fire mitigation	M	Attend meetings as required
Victoria Police	Specific to evacuation and traffic management	M	Attend meetings as required
Victoria State Emergency Service	Specific to supporting response and recovery activities	M	Attend meetings as required
SP AusNet	Strategic asset management for fire mitigation	M	Attend meetings as required
United Energy	Strategic asset management for fire mitigation	M	Attend meetings as required
Melbourne Water	Strategic asset management for fire mitigation	M	Attend meetings as required
Yarra Valley Water	Strategic asset management for fire mitigation	M	Attend meetings as required
Municipal Emergency Management Planning Committee	MFMP is a sub component of the committees Municipal Emergency Management Plan	H	MFMP provides meeting minutes to MEMPC and is represented at the MFMP

Appendix D.3 – List key stakeholders

Based on the IAP2 spectrum in the Community Consultation and Engagement Policy (2010)

Name of stakeholder groups	Level of engagement	Engagement method/channel	Key messages
Primary agencies CFA MFB DSE MCC	Consult Involve Collaborate	Stakeholder workshops, briefings, meetings	Developing the plan, responsible for the delivery of the communications and consultation plan
Secondary agencies Vic Roads Victoria SES Victoria Police SP AusNet United Energy Yarra Valley Water Melbourne Water	Inform Involve Empower	Stakeholder workshops, briefings, meetings as required Direct letters requesting input when required	Plan is being drafted, MFMP is seeking input Input requested through MFMP Draft complete MFMP is seeking comment
Environment groups Wonga Park Jumping Creek Catchment Land Care group Friends of the Warrandyte State Park Scout Groups	Inform	Direct mail letters Draft to be placed on website and available at Council offices for viewing Advertising that draft is available for comment Plan available at fire consultation days such as DSE's FOPs and CFA's Fire Ready Victoria sessions Community discussion forums run if there is enough interest	Plan is currently being drafted, background, objective of the plan, where interest should be directed Plan been drafted, comments are requested. Methods for accessing information

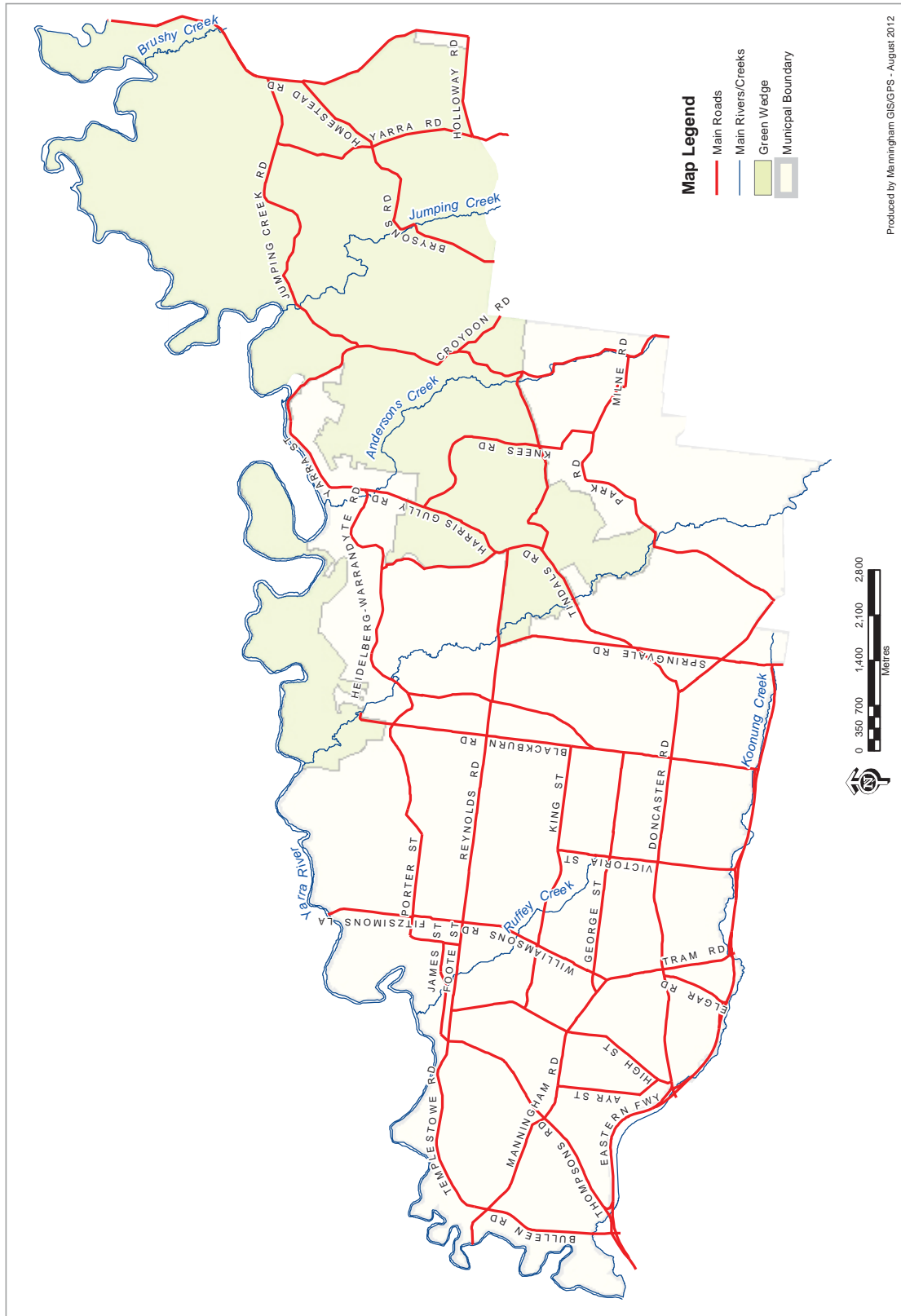
List key stakeholders - based on the IAP2 spectrum in the Community Consultation and Engagement Policy (2010)

Name of stakeholder Groups	Level of engagement	Engagement method/channel	Key messages
Resident groups Wonga Park Residents Association Rate payers association	Inform	Direct mail letters Draft to be placed on website and available at Council offices for viewing Advertising that draft is available for comment Plan available at fire consultation days such as DSE's FOPs and CFA's Fire Ready Victoria program Community discussion forums run if there is enough interest	Plan is currently being drafted, background, objective of the plan, where interest should be directed Plan has been drafted, comments are requested. Methods for accessing information
Business groups Warrandyte Businesses Association Warrandyte Community Association Manningham business network	Inform	Direct mail letters Draft to be placed on website and available at Council offices for viewing Advertising that draft is available for comment Plan available at fire consultation days such as DSE's FOPs and CFA's Fire Ready Victoria sessions Community discussion forums run if there is enough interest	Plan is currently being drafted, objective of the plan, where interest should be directed Plan has been drafted, comments are requested. Methods for accessing information
Media Manningham Leader Manningham Matters Warrandyte Diary	Inform	Direct mail letters Draft to be placed on website and available at Council offices for viewing Advertising that draft is available for comment Plan available at fire consultation days such as DSE's FOPs and CFA's Fire Ready Victoria sessions	Plan is currently being drafted, background, objective of the plan, where interest should be directed Plan has been drafted, comments are requested. Methods for accessing information
Local MPs	Inform	Direct mail letters Draft to be provided for comment	Plan is currently being drafted, background, objective of the plan, where interest should be directed for constituents Plan has been drafted, comments were requested. Methods for accessing information

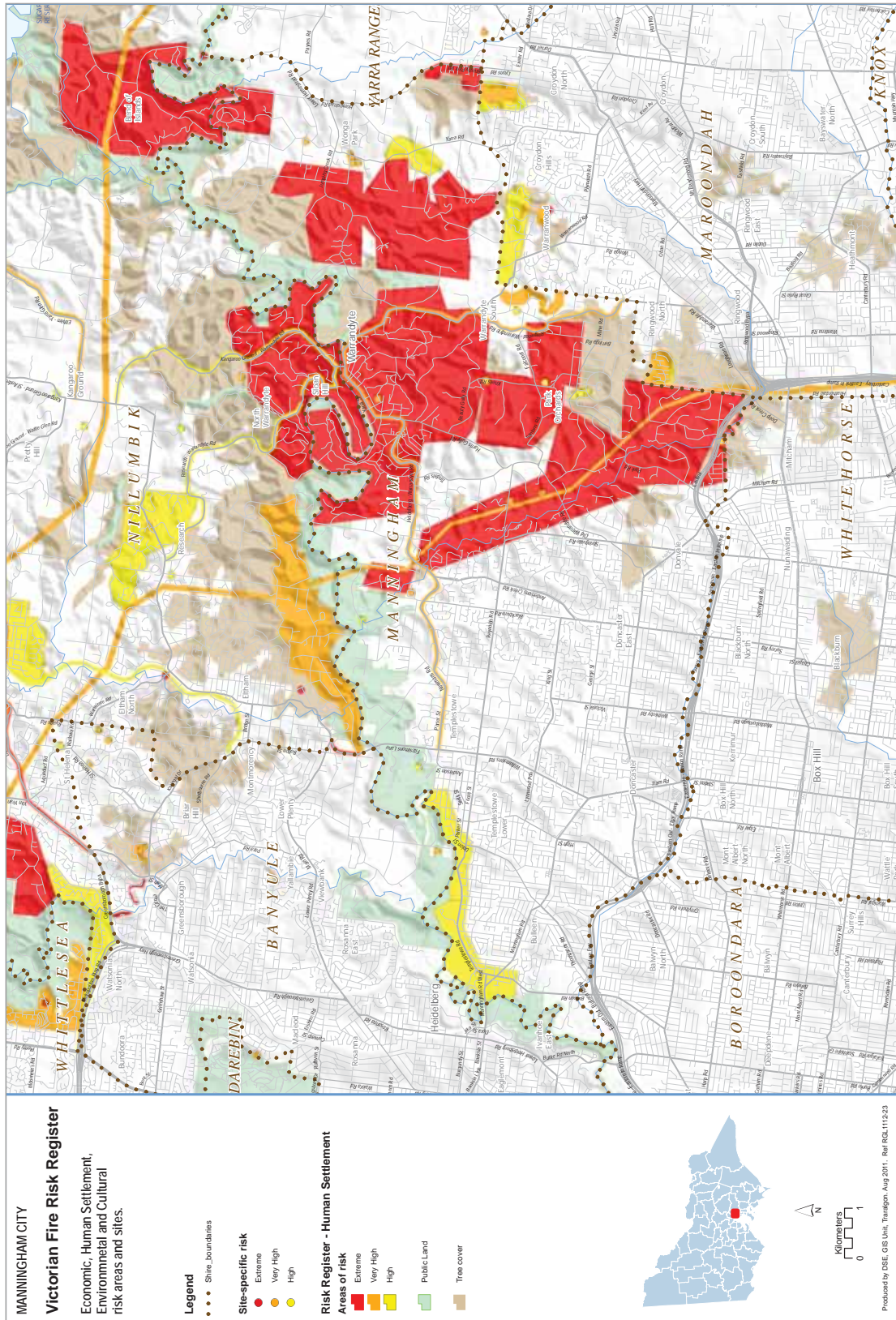
APPENDIX E

Appendix E – Maps

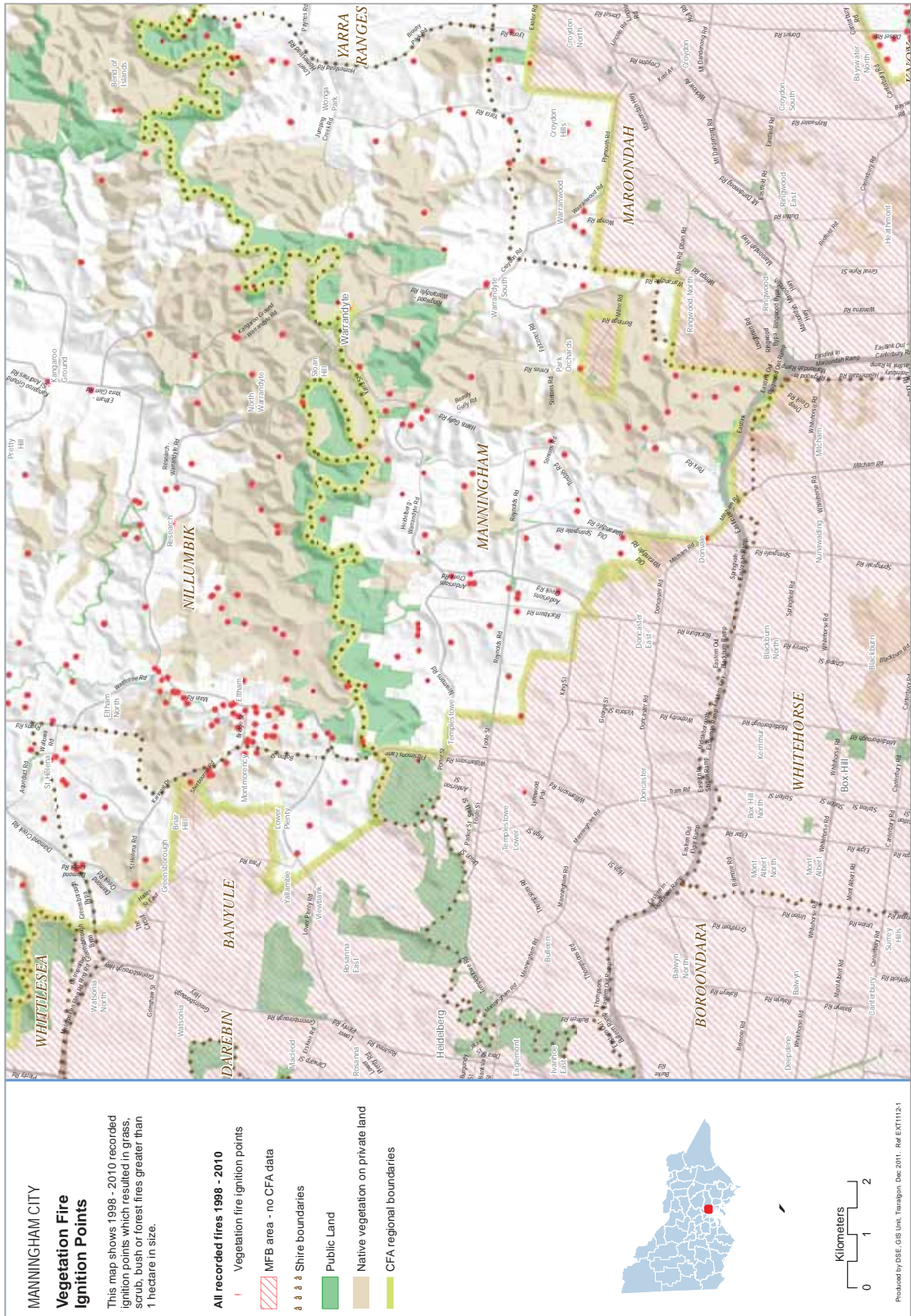
The Manningham Green Wedge



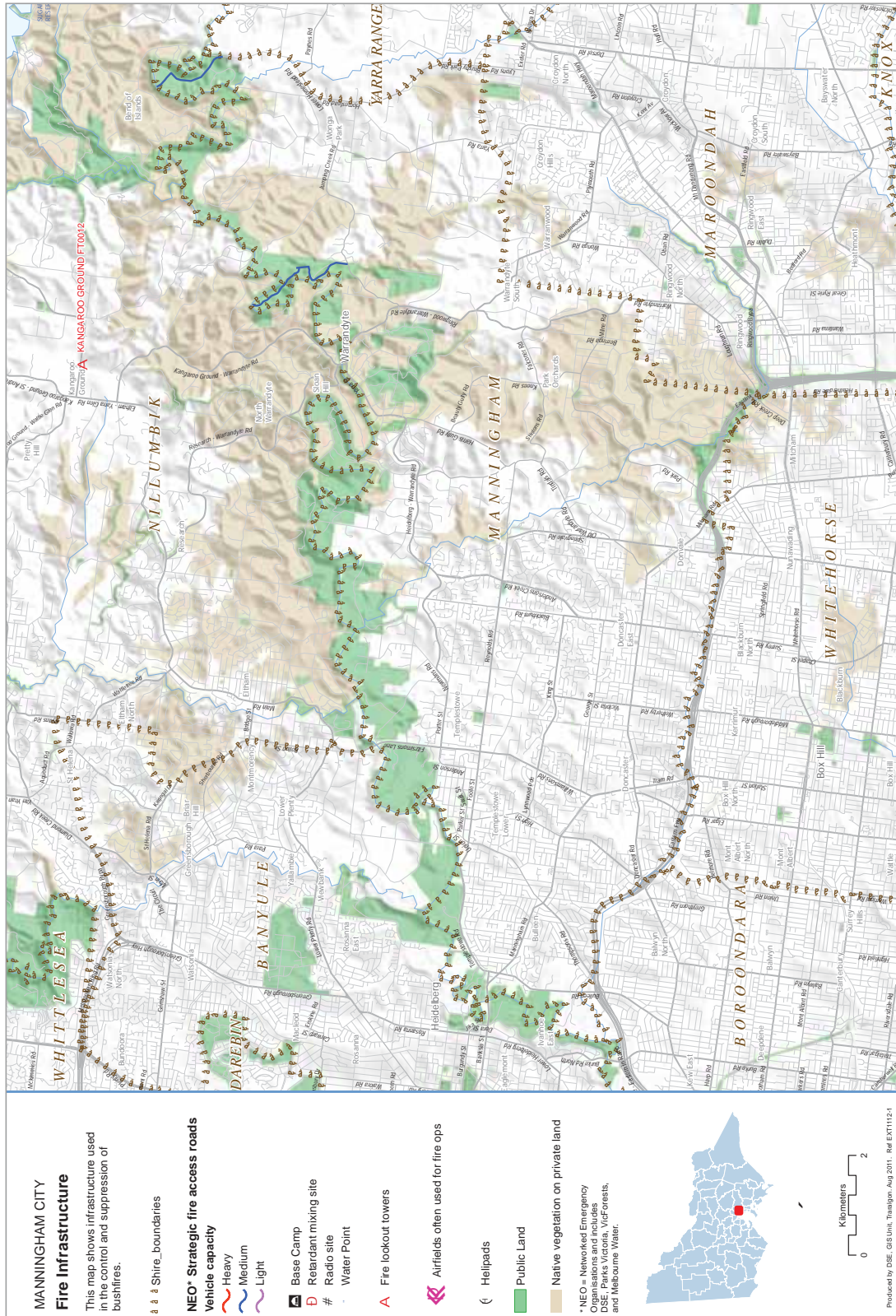
Shire map: Victorian Fire Risk Register Manningham



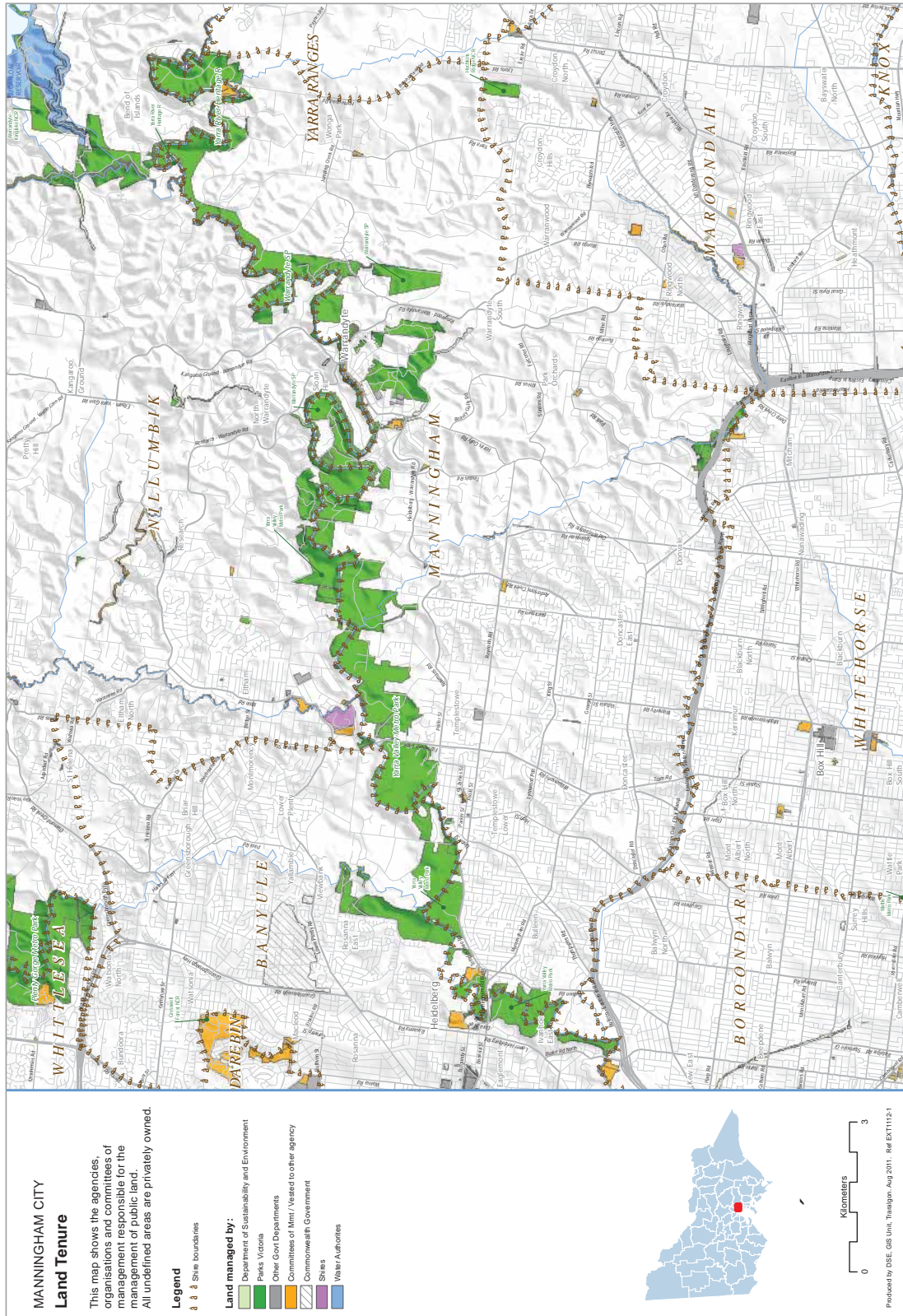
Vegetation Fire Ignition Points Manningham



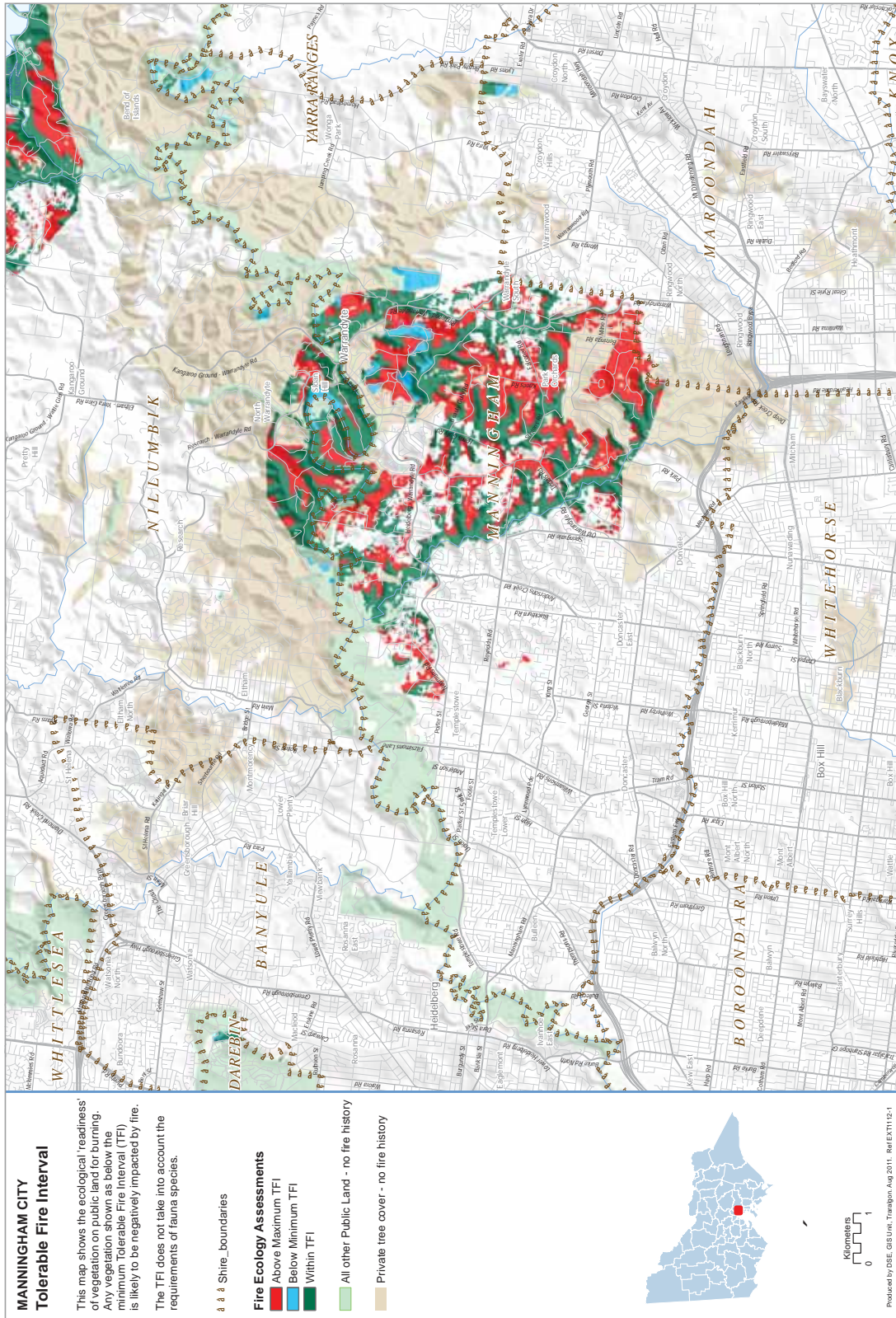
Fire Infrastructure Manningham



Land Tenure Manningham



Land Tenure Manningham



Bibliography

- AFAC. (2010, December). *Bushfire glossary*. Retrieved November 22, 2011, from Australasian Fire and Emergency Services Authorities Council web site: http://knowledgeweb.afac.com.au/data/bushfire_glossary
- Australian Bureau of Statistics, Census of Population and Housing 2006 and 2011. Compiled and presented by .id, the population experts.
- CFA (2008). *Precincts: an Approach to Integrated Service Delivery*. CFA, Melbourne.
- CFA Act 1958, www.cfa.vic.gov.au
- DSE Geospatial Data Library, 2003
- DSE. (2012, February). Retrieved October 09, 2012, from DSE website: http://www.dse.vic.gov.au/__data/assets/pdf_file/0007/135943/Roadside-Vegetation-Management-for-bushfire-risk-mitigation-purposes.pdf
- DSE. (2012, June). Fire and Emergencies. Retrieved October 09, 2012, from DSE website: <http://www.dse.vic.gov.au/fire-and-other-emergencies/publications-and-research/code-of-practice-for-bushfire-management-on-public-land>
- DSE. (2009, April). Managing native roadside vegetation. Retrieved October 04, 2012, from DSE website: http://www.dse.vic.gov.au/__data/assets/pdf_file/0007/102310/Managing_native_vegetation_on_road_sides.pdf
- Eastern Meropolitan Regional Strategic Fire Management Plan 2011, www.ifmp.vic.gov.au
- EMA (2000). *Emergency Risk Management: Applications Guide*. Emergency Management Australia, Canberra.
- Geotech Information Services (2010) Urban Fire Risk Profile, Manningham Urban Area & surrounds.
- IAP2. (2011). *Resources*. Retrieved November 23, 2011, from International association for public participation: http://www.iap2.org.au/resources/list/asset_id/36/cid/1/parent/0/t/resources/title/IAP2%20Spectrum
- IFMP guidelines. (2010, September). Integrated fire management planning guidelines. Victoria, Australia: Authorised by the State Fire Management Planning Committee.
- Manningham Council Plan 2009-2013
- MCC (2002). *Municipal Emergency Management Plan* and City of Manningham Planning Scheme.
- Metropolitan Fire Brigades (MFB) Act, 1958
- McAneney, J. and Chen, K. (2010) *Bushfire Penetration into Urban Areas in Australia: A Spatial Analysis*, Bushfire CRC Report for the Victorian Bushfires Royal Commission.
- National Strategy for Disaster Resilience, 2009, www.coag.gov.au/.../2011-02-13/docs/national_strategy_disaster_resilience.pdf
- SFMPC. (2009, September). State Fire Management Strategy 2009. (www.ifmp.vic.gov.au, Ed.) State of Victoria.
- Standards Australia (2009). *ISO 31000:2009 Risk management – Principles and guidelines. Standards Australia, Sydney*.
- State of Victoria. (2011, January). *Emergency Management Manual Victoria*. Emergency Management Manual Victoria, www.oesc.vic.gov.au/emergencymanual
- State of Victoria. Emergency Management Act 1986, www.oesc.vic.gov.au
- Terramatrix (2009). *City of Manningham Bushfire Prevention and Preparedness Plans for Bushland Reserves: Context and Methodology*. Terramatrix, Beechworth
- VFRR. (2011, November 11). *Victorian Fire Risk Register Reference Guide*. Retrieved November 22, 2011, from VFRR web site: http://vfrf.fileburst.com/VFRR/VFRR_Supporting_Documentation/

Disclaimer

This publication may be of assistance to you. However the State of Victoria and its employees do not guarantee that the publication is without flaw of any kind, or is wholly appropriate for your particular purposes. It therefore disclaims all liability for any error, loss or other consequence which may arise from you relying on any information in this publication.



For more information go to: www.ifmp.vic.gov.au

