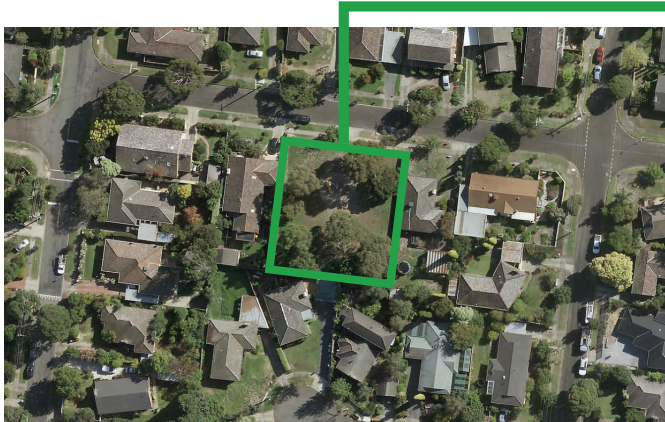


We're upgrading Aintree Reserve



As part of Manningham's open space capital works program, the Aintree Reserve playspace in Doncaster is being upgraded.

The upgrade will include:

- New multi-activity play equipment, including monkey bars and a double slide
- New triple swing, including basket swing
- New access path and picnic table area
- Rocks and balancing logs and steppers for nature play
- New tree and garden bed planting
- Retaining the grass areas for play

Construction works are scheduled to start during May and will take approximately four weeks to complete.

More information and enquiries

manningham.vic.gov.au/aintree-reserve-playground

9840 9333



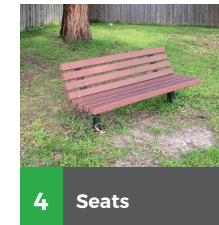
1 Multi play unit



2 Triple swing



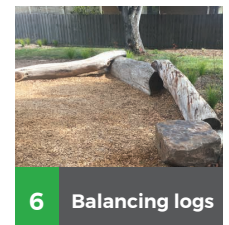
3 Concrete path



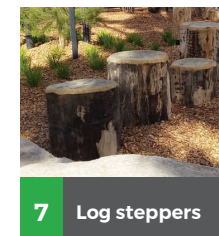
4 Seats



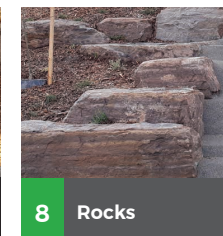
5 Picnic table area



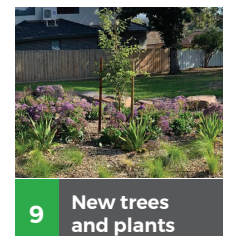
6 Balancing logs



7 Log steppers



8 Rocks



9 New trees and plants



Interpreter service 9840 9355

普通话 | 廣東話 | Ελληνικό Italiano | عربي | فارسی